



[Go to Product page](#)

Datasheet for ABIN530135
anti-MYL10 antibody (AA 1-226)

1 Image

Overview

Quantity:	100 µg
Target:	MYL10
Binding Specificity:	AA 1-226
Reactivity:	Human
Host:	Rabbit
Clonality:	Polyclonal
Conjugate:	This MYL10 antibody is un-conjugated
Application:	Western Blotting (WB)

Product Details

Purpose:	Rabbit polyclonal antibody raised against a full-length human MYLC2PL protein.
Immunogen:	MYLC2PL (NP_612412.2, 1 a.a. ~ 226 a.a) full-length human protein.
Sequence:	MLLRVLSNSW PQVILPPRPP KVLGLQAPRR ARKRAEGTAS SNVFSMFDQS QIQEFKESLA LSPRLERNGM ISAHCNLCCLT GSSNSPASAS QAFTIMDQNR DGFIDKEDLR DTFAALGRIN VKNEELEAMV KEAPGPINFT VFLTMFGEKL KGTDPPEETIL HAFKVFDTTEG KGFVKADVIK EKLMTQADRF SEEEVKQMFA AFPPDVCGNL DYRNLCYVIT HGEEKD
Cross-Reactivity:	Human
Characteristics:	Antibody reactive against mammalian transfected lysate.

Target Details

Target:	MYL10
---------	-------

Target Details

Alternative Name:	MYLC2PL (MYL10 Products)
Background:	Full Gene Name: myosin light chain 2, precursor lymphocyte-specific Synonyms: PLRLC
Gene ID:	93408
NCBI Accession:	NM_138403

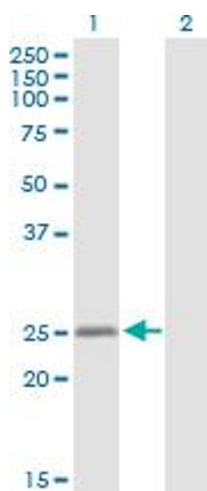
Application Details

Application Notes:	Optimal working dilution should be determined by the investigator.
Restrictions:	For Research Use only

Handling

Buffer:	In 1x PBS, pH 7.4
Handling Advice:	Aliquot to avoid repeated freezing and thawing.
Storage:	-20 °C
Storage Comment:	Store at -20°C or lower. Aliquot to avoid repeated freezing and thawing.

Images



Western Blotting

Image 1. Western Blot analysis of MYLC2PL expression in transfected 293T cell line by MYLC2PL MaxPab polyclonal antibody.

Lane 1: MYLC2PL transfected lysate(25.30 KDa).

Lane 2: Non-transfected lysate.