



[Go to Product page](#)

Datasheet for ABIN530194
anti-ERI2 antibody (AA 1-328)

2 Images

Overview

Quantity:	50 µg
Target:	ERI2 (EXOD1)
Binding Specificity:	AA 1-328
Reactivity:	Human
Host:	Mouse
Clonality:	Polyclonal
Conjugate:	This ERI2 antibody is un-conjugated
Application:	Western Blotting (WB), Immunofluorescence (IF)

Product Details

Purpose:	Mouse polyclonal antibody raised against a full-length human MGC16943 protein.
Immunogen:	MGC16943 (NP_542394.1, 1 a.a. ~ 328 a.a) full-length human protein.
Sequence:	MATKRLARQL GLIRRSIAP ANGNLGRSKS KQLFDYLIVI DFESTCWNDG KHHHSQEIIE FPAVLLNTST GQIDSEFQAY VQPQEHPILS EFCMELTGIK QAQVDEGVPL KICLSQFCKW IHKIQQKNI IFATGISEPS ASEVKLCAFV TWSDWDLGVC LEYECKRKQL LKPVFLNSWI DLRATYKLFY RRPKGLSGA LQEVGIEFSG REHSGLDDSR NTALLAWKMI RDGCVMKITR SLNKGPFLLP SWTWNSDLAS GDQHAFKQE FCGTYRLL QKPNMSKQEK GNILWLTMWV LSLACLQRKN YNDCMLNTAS QTVTTEKF
Cross-Reactivity:	Human
Characteristics:	Antibody reactive against mammalian transfected lysate.

Target Details

Target:	ERI2 (EXOD1)
Alternative Name:	ERI2 (EXOD1 Products)
Background:	Full Gene Name: exoribonuclease 2 Synonyms: EXOD1,KIAA1504,MGC16943
Gene ID:	112479
NCBI Accession:	NM_080663

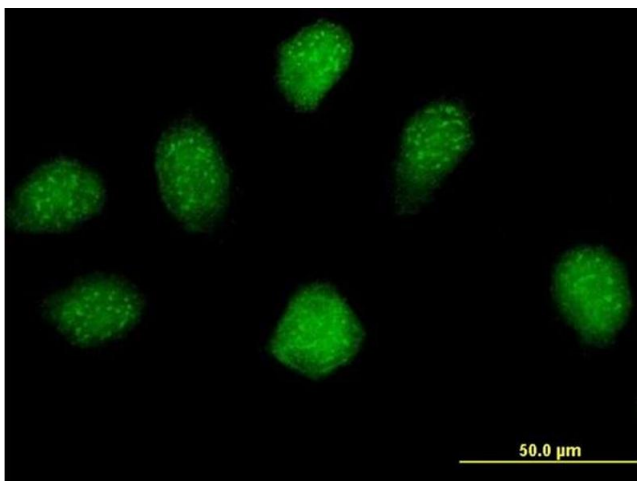
Application Details

Application Notes:	Optimal working dilution should be determined by the investigator.
Restrictions:	For Research Use only

Handling

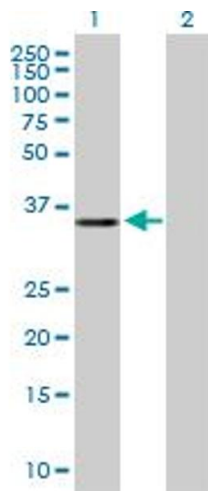
Buffer:	In 1x PBS, pH 7.4
Handling Advice:	Aliquot to avoid repeated freezing and thawing.
Storage:	-20 °C
Storage Comment:	Store at -20°C or lower. Aliquot to avoid repeated freezing and thawing.

Images



Immunofluorescence

Image 1. Immunofluorescence of purified MaxPab antibody to MGC16943 on HeLa cell. [antibody concentration 10 ug/ml]



Western Blotting

Image 2. Western Blot analysis of ERI2 expression in transfected 293T cell line by ERI2 MaxPab polyclonal antibody.

Lane 1: MGC16943 transfected lysate(36.08 kDa).

Lane 2: Non-transfected lysate.