

Datasheet for ABIN530204  
**anti-PHF21B antibody (AA 1-531)**



[Go to Product page](#)

3 Images

Overview

Quantity:	50 µg
Target:	PHF21B
Binding Specificity:	AA 1-531
Reactivity:	Human
Host:	Mouse
Clonality:	Polyclonal
Conjugate:	This PHF21B antibody is un-conjugated
Application:	Western Blotting (WB), Immunofluorescence (IF)

Product Details

Purpose:	Mouse polyclonal antibody raised against a full-length human PHF21B protein.
Immunogen:	PHF21B (NP_612424.1, 1 a.a. ~ 531 a.a) full-length human protein.
Sequence:	MELQSRPEAL AVELARHQNG DLKKQLHERQ PRIAALSDKQ ALGTITAVPV TGPQVSSLQR LAGQGAAVLP QVRPKTLIPD SLPVAPGRDR PPKQPPTFQK ATVVSVKNPS PALPTANNTV SHVPAPGSQP QALAEPAAAL SPLSSAGVAY AIISTSPSNA AAMAPSTAVS VVSDSIKVQP LLISADNKPP PRLLSSPHA THHCPLHPSS LPLTPSPSL SPSPLHGIFQ VIIIQPQVQT QPESTAESRP PTEEPSQGAQ ATKKKKEDRP PTQENPEKIA FMVALGLVTT EHLEEIQSKR QERKRRSTAN PAYSGLLETE RKRLASNYLN NPLFLTARAN EDPCWKNEIT HDEHCAACKR GANLQPCGTC PGAYHLSCLE PPLKTAPKGV WVCPRCQKA LKKDEGVPWT GMLAIVHSYV THKTVKEEEK QKLLQRGSEL QNEHQLEER DRRLASAVQK CLELKTSLLA RQRGTQSSLD RLRALLRLIQ GEQLLQVTMT TTSPAPLLAG PWTKPSVAAT HPTVQHPQGH N

## Product Details

---

Cross-Reactivity:	Human
Characteristics:	Antibody reactive against mammalian transfected lysate.

## Target Details

---

Target:	PHF21B
Alternative Name:	PHF21B ( <a href="#">PHF21B Products</a> )
Background:	Full Gene Name: PHD finger protein 21B Synonyms: BHC80L,FLJ34161,PHF4
Gene ID:	112885
NCBI Accession:	<a href="#">NM_138415</a>

## Application Details

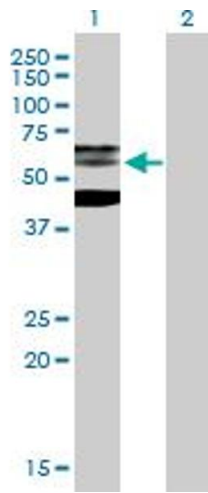
---

Application Notes:	Optimal working dilution should be determined by the investigator.
Restrictions:	For Research Use only

## Handling

---

Buffer:	In 1x PBS, pH 7.4
Handling Advice:	Aliquot to avoid repeated freezing and thawing.
Storage:	-20 °C
Storage Comment:	Store at -20°C or lower. Aliquot to avoid repeated freezing and thawing.

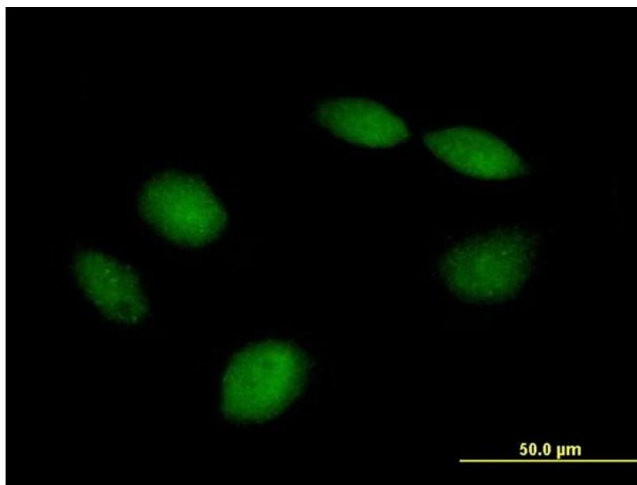


### Western Blotting

**Image 1.** Western Blot analysis of PHF21B expression in transfected 293T cell line by PHF21B MaxPab polyclonal antibody.

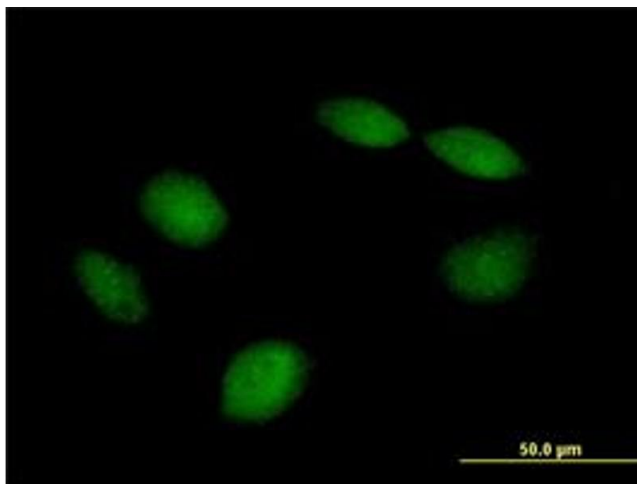
Lane 1: PHF21B transfected lysate(58.41 KDa).

Lane 2: Non-transfected lysate.



### Immunofluorescence

**Image 2.** Immunofluorescence of purified MaxPab antibody to PHF21B on HeLa cell. [antibody concentration 10  $\mu$ g/ml]



### Immunofluorescence

**Image 3.** Immunofluorescence of purified MaxPab antibody to PHF21B on HeLa cell. (antibody concentration 10  $\mu$ g/mL)