



[Go to Product page](#)

Datasheet for ABIN530205

## anti-GLB1L3 antibody (AA 1-313)

### 1 Image

#### Overview

Quantity:	50 µg
Target:	GLB1L3
Binding Specificity:	AA 1-313
Reactivity:	Human
Host:	Mouse
Clonality:	Polyclonal
Conjugate:	This GLB1L3 antibody is un-conjugated
Application:	Western Blotting (WB)

#### Product Details

Purpose:	Mouse polyclonal antibody raised against a full-length human LOC112937 protein.
Immunogen:	LOC112937 (AAH11001, 1 a.a. ~ 313 a.a) full-length human protein.
Sequence:	MKSPLLSPLSWKRMAGIFFLPFISSGFA PRFKQEENFM LGRAHPSQPR FNWSHLTPLE LKNRSVGLGT ESTGRGKPHF TLEGHKFLIF GGSIHYFRVP REYWRDRLK LKACGFNTVT TYVPWNLHEP ERGKDFDFSGN LDLEAFVLM AEIGLWVILR PGPYICSEMD LGGLPSWLLQ DPRLLLRTTN KSFIEAVEKY FDHLIPRVIP LQYRQAGPVI AVQVENEYGS FNKDKTYMPY LHKALLRRGI VELLTSDGE KHVLSGHTKG VLAAILNQLK HQDTFNQLHK VQGASIDAGL LSDASQAATS SSL
Cross-Reactivity:	Human
Characteristics:	Antibody reactive against mammalian transfected lysate.

## Target Details

Target:	GLB1L3
Alternative Name:	GLB1L3 ( <a href="#">GLB1L3 Products</a> )
Background:	Full Gene Name: galactosidase, beta 1-like 3 Synonyms: FLJ90231
Gene ID:	112937

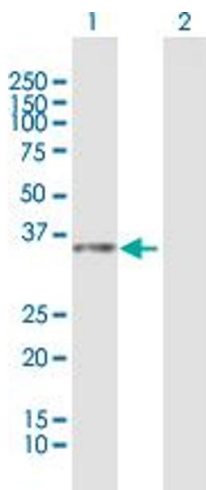
## Application Details

Application Notes:	Optimal working dilution should be determined by the investigator.
Restrictions:	For Research Use only

## Handling

Buffer:	In 1x PBS, pH 7.4
Handling Advice:	Aliquot to avoid repeated freezing and thawing.
Storage:	-20 °C
Storage Comment:	Store at -20°C or lower. Aliquot to avoid repeated freezing and thawing.

## Images



### Western Blotting

**Image 1.** Western Blot analysis of LOC112937 expression in transfected 293T cell line by LOC112937 MaxPab polyclonal antibody.

Lane 1: LOC112937 transfected lysate(34.43 KDa).

Lane 2: Non-transfected lysate.