



[Go to Product page](#)

Datasheet for ABIN530284

anti-KLHL29 antibody (AA 1-503)

2 Images

Overview

| | |
|----------------------|--|
| Quantity: | 50 µg |
| Target: | KLHL29 |
| Binding Specificity: | AA 1-503 |
| Reactivity: | Human |
| Host: | Mouse |
| Clonality: | Polyclonal |
| Conjugate: | This KLHL29 antibody is un-conjugated |
| Application: | Western Blotting (WB), Immunofluorescence (IF) |

Product Details

| | |
|------------|--|
| Purpose: | Mouse polyclonal antibody raised against a full-length human KBTBD9 protein. |
| Immunogen: | KBTBD9 (AAH15667, 1 a.a. ~ 503 a.a) full-length human protein. |
| Sequence: | MPGHYSLPQP PSQPLSSVVV NMPAQALYAS PQPLAVSTLP GVGQVARPGP TAVGNHGMAG PLLPPPPPAQ PSATLPSGAP ATNGPPTTDS AHGLQMLRTI GVGKYFTDP GHPREMLKEL NQRRAKAFT DLKIVVEGRE FEVHQNVLAS CSLYFKDLIQ RSVQDSGQGG REKLELVLSN LQADVLELLL EFVYTGSLVI DSANAKTLE AASKFQFHTF CKVCVSFLEK QLTASNCLGV LAMAEAMQCS ELYHMAKAFALQIFPEVAAQ EEILSISKDD FIAYVSNDSL NTKAEELVYE TVIKWIKKDP ATRTQYAAEL LAVVRLPFH PSYLLNVVDN EELIKSSEAC RDLVNEAKRY HMLPHARQEM QTPRTRPRLS AGVAEVIVLV GGRQMVGMTQ RSLVAVTCWN PQNNKWYPLA SLPFYDREFF SVVSAGDNIY LSGGMESGVT LADVWCYMSL LDNWNLVSRM TVPRCRHNSL VYDGKIYTLG GLGVAGNVDH VER |

Product Details

| | |
|-------------------|---|
| Cross-Reactivity: | Human |
| Characteristics: | Antibody reactive against mammalian transfected lysate. |

Target Details

| | |
|-------------------|---|
| Target: | KLHL29 |
| Alternative Name: | KLHL29 (KLHL29 Products) |
| Background: | Full Gene Name: kelch-like 29 (Drosophila) Synonyms: KBTBD9,KIAA1921 |
| Gene ID: | 114818 |

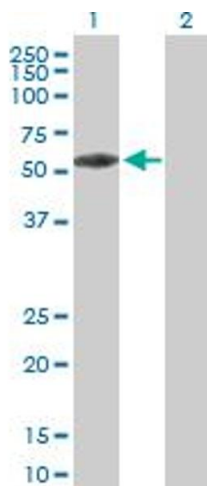
Application Details

| | |
|--------------------|--|
| Application Notes: | Optimal working dilution should be determined by the investigator. |
| Restrictions: | For Research Use only |

Handling

| | |
|------------------|--|
| Buffer: | In 1x PBS, pH 7.4 |
| Handling Advice: | Aliquot to avoid repeated freezing and thawing. |
| Storage: | -20 °C |
| Storage Comment: | Store at -20°C or lower. Aliquot to avoid repeated freezing and thawing. |

Images

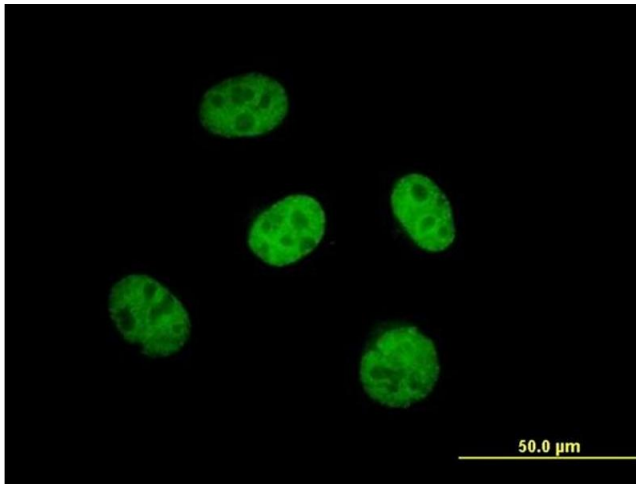


Western Blotting

Image 1. Western Blot analysis of KBTBD9 expression in transfected 293T cell line by KBTBD9 MaxPab polyclonal antibody.

Lane 1: KBTBD9 transfected lysate(55.33 kDa).

Lane 2: Non-transfected lysate.



Immunofluorescence

Image 2. Immunofluorescence of purified MaxPab antibody to KBTBD9 on HeLa cell. [antibody concentration 10 ug/ml]