



Datasheet for ABIN530286 anti-RHPN1 antibody (AA 1-670)



[Go to Product page](#)

1 Image

Overview

Quantity:	50 µg
Target:	RHPN1
Binding Specificity:	AA 1-670
Reactivity:	Human
Host:	Mouse
Clonality:	Polyclonal
Conjugate:	This RHPN1 antibody is un-conjugated
Application:	Western Blotting (WB)

Product Details

Purpose:	Mouse polyclonal antibody raised against a full-length human RHPN1 protein.
Immunogen:	RHPN1 (NP_443156.2, 1 a.a. ~ 670 a.a) full-length human protein.
Sequence:	MILEERPDGA GAGEESPR LQ GCD SLTQIQ C GQLQSRRAQI HQQIDKELQM RTGAENLYRA TSNNRVRETV ALELSYVNSN LQLLKEELEE LSGGVDPGRH GSEAVTVPMI PLGLKETKEL DWSTPLKELI SVHFGEDGAS YEAEIRELEA LRQAMRTPSR NESGLELLTA YYNQLCFLDA RFLTPARSLG LFFHWYDSL TGVPAQQRALA FEKGSVLFNI GALHTQIGAR QDRSCTEGAR RAMEAFQRAA GAFSLLRENF SHAPSPDMSA ASLCALEQLM MAQAQECVFE GLSPPASMAP QDCLAQLRLA QEAAQVAAEY RLVHRTMAQP PVHDYVPVSW TALVHVKA EY FRSLAHYHVA MALCDGSPAT EGELPTHEQV FLQPPTSSKP RGPVLPQELE ERRQLGKAHL KRAILGQEEA LRLHALCRVL REVDLLRAVI SQT LQRSLAK YAELDREDDF CEA AEAPDIQ PKTHQKPEAR MPRLSQGKGP DIFHRLGPLS VFS AKNRWRL VGPVHLTRGE GGFGLTLRGD SPVLIAAVIP GSQAAAAGLK EGDYIVSVNG QPCRWWRHAE VVTELKAAGE AGASLQVVSL LPSSRLPSLG

Product Details

DRRPVLLGPR GLLRSQREHG CKTPASTWAS PRPLLNWSRK AQQGKTGGCP QPCAPVKPAP
PSSLKHGWP

Cross-Reactivity: Human

Characteristics: Antibody reactive against mammalian transfected lysate.

Target Details

Target: RHPN1

Alternative Name: RHPN1 ([RHPN1 Products](#))

Background: Full Gene Name: rhophilin, Rho GTPase binding protein 1
Synonyms: KIAA1929,ODF5,RHOPHILIN,RHPN

Gene ID: 114822

Application Details

Application Notes: Optimal working dilution should be determined by the investigator.

Restrictions: For Research Use only

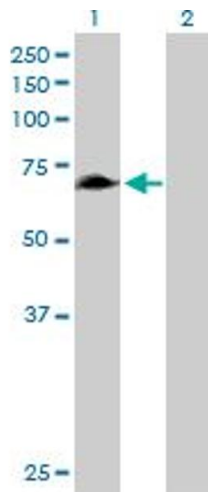
Handling

Buffer: In 1x PBS, pH 7.4

Handling Advice: Aliquot to avoid repeated freezing and thawing.

Storage: -20 °C

Storage Comment: Store at -20°C or lower. Aliquot to avoid repeated freezing and thawing.



Western Blotting

Image 1. Western Blot analysis of RHPN1 expression in transfected 293T cell line by RHPN1 MaxPab polyclonal antibody.

Lane 1: RHPN1 transfected lysate(73.7 KDa).

Lane 2: Non-transfected lysate.