



[Go to Product page](#)

Datasheet for ABIN530303

anti-CTRP6 antibody (AA 32-278)

2 Images

Overview

Quantity:	50 µg
Target:	CTRP6 (C1QTNF6)
Binding Specificity:	AA 32-278
Reactivity:	Human
Host:	Mouse
Clonality:	Polyclonal
Conjugate:	This CTRP6 antibody is un-conjugated
Application:	Western Blotting (WB)

Product Details

Purpose:	Mouse polyclonal antibody raised against a full-length human C1QTNF6 protein.
Immunogen:	C1QTNF6 (AAH20551, 32 a.a. ~ 278 a.a) full-length human protein.
Sequence:	LLLFLLMCEI PMVELTFDRA VASGCQRCCD SEDPLDPAHV SSASSSGRPH ALPEIRPYIN ITILKGDKGD PGPMLPGYM GREGPQGEPEG PQGSKGDKGE MGSPGAPCQK RFFAFSVGRK TALHSGEDFQ TLLFERVFN LDGCFDMATG QFAAPLRGIY FFSLNVHSWN YKETYVHIMH NQKEAVILYA QPSERSIMQS QSVMLDLAYG DRVWVRLFKR QRENAIYSND FDTYITFSGH LIKAEDD
Cross-Reactivity:	Human
Characteristics:	Antibody reactive against mammalian transfected lysate.

Target Details

Target:	CTRP6 (C1QTNF6)
Alternative Name:	C1QTNF6 (C1QTNF6 Products)
Background:	Full Gene Name: C1q and tumor necrosis factor related protein 6 Synonyms: CTRP6,ZACRP6
Gene ID:	114904

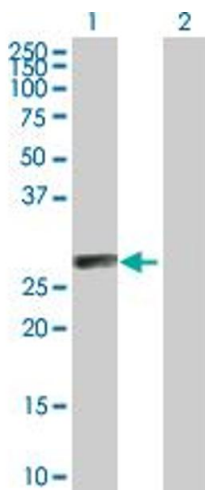
Application Details

Application Notes:	Optimal working dilution should be determined by the investigator.
Restrictions:	For Research Use only

Handling

Buffer:	In 1x PBS, pH 7.4
Handling Advice:	Aliquot to avoid repeated freezing and thawing.
Storage:	-20 °C
Storage Comment:	Store at -20°C or lower. Aliquot to avoid repeated freezing and thawing.

Images

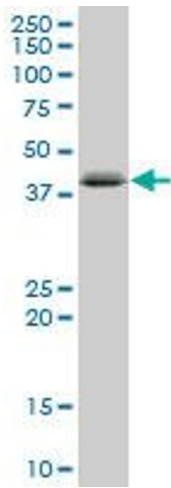


Western Blotting

Image 1. Western Blot analysis of C1QTNF6 expression in transfected 293T cell line by C1QTNF6 MaxPab polyclonal antibody.

Lane 1: C1QTNF6 transfected lysate(30.69 KDa).

Lane 2: Non-transfected lysate.



Western Blotting

Image 2. C1QTNF6 MaxPab polyclonal antibody. Western Blot analysis of C1QTNF6 expression in human placenta.