



Datasheet for ABIN530317
anti-Slc26a9 antibody (AA 496-605)



[Go to Product page](#)

2 Images

Overview

Quantity:	100 µg
Target:	Slc26a9
Binding Specificity:	AA 496-605
Reactivity:	Human
Host:	Mouse
Clonality:	Monoclonal
Conjugate:	This Slc26a9 antibody is un-conjugated
Application:	ELISA, Western Blotting (WB)

Product Details

Purpose:	Mouse monoclonal antibody raised against a partial recombinant SLC26A9.
Immunogen:	SLC26A9 (NP_443166, 496 a.a. ~ 605 a.a) partial recombinant protein with GST tag. MW of the GST tag alone is 26 KDa.
Sequence:	QTQFRNGYAL AQVMDTDIYV NPKTYNRAQD IQGIKIITYC SPLYFANSEI FRQKVIKTG MDPQKVLLAK QKYLKKQEKR RMRPTQRRS LFMKTKTVSL QELQQDFENA
Clone:	4E9
Isotype:	IgG2b
Cross-Reactivity:	Human
Characteristics:	Antibody Reactive Against Recombinant Protein.

Target Details

Target:	Slc26a9
Alternative Name:	SLC26A9 (Slc26a9 Products)
Background:	Full Gene Name: solute carrier family 26, member 9 Synonyms:
Gene ID:	115019
NCBI Accession:	NM_052934

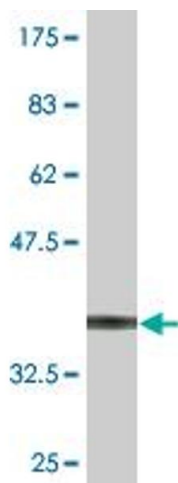
Application Details

Application Notes:	Optimal working dilution should be determined by the investigator.
Restrictions:	For Research Use only

Handling

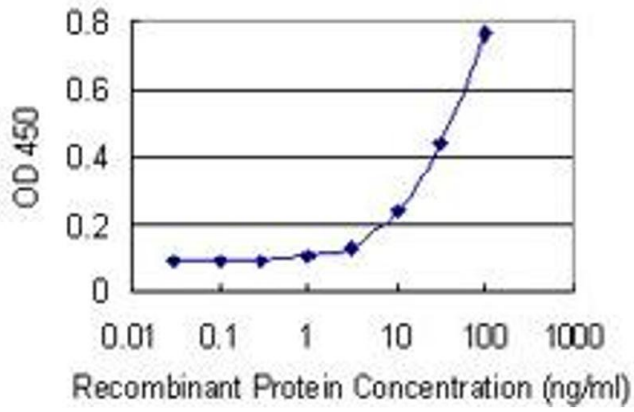
Buffer:	In 1x PBS, pH 7.4
Handling Advice:	Aliquot to avoid repeated freezing and thawing.
Storage:	-20 °C
Storage Comment:	Store at -20°C or lower. Aliquot to avoid repeated freezing and thawing.

Images



Western Blotting

Image 1. Western Blot detection against Immunogen (37.84 kDa).



ELISA

Image 2. Detection limit for recombinant GST tagged SLC26A9 is 1 ng/ml as a capture antibody.