



## Datasheet for ABIN530341 **anti-ZNF689 antibody (AA 1-500)**



[Go to Product page](#)

### 1 Image

#### Overview

Quantity:	50 µg
Target:	ZNF689
Binding Specificity:	AA 1-500
Reactivity:	Human
Host:	Mouse
Clonality:	Polyclonal
Conjugate:	This ZNF689 antibody is un-conjugated
Application:	Western Blotting (WB)

#### Product Details

Purpose:	Mouse polyclonal antibody raised against a full-length human ZNF689 protein.
Immunogen:	ZNF689 (NP_612456, 1 a.a. ~ 500 a.a) full-length human protein.
Sequence:	MAPPSAPLPA QGPGKARPSR KRGRPRALK FVDVAVYFSP EEWGCLRPAQ RALYRDVMRE TYGHLGALGC AGPKPALISW LERNTDDWEP AALDPQEYPR GLTVQRKSRT RKKNGEKEVF PPKEAPRKGK RGRRPSKPRL IPRQTSGGPI CPDCGCTFPD HQALESHKCA QNLKKPYPCP DCGRRFSYPS LLVSHRRAHS GECPYVCDQC GKRFSQRKNL SQHQVIHTGE KPYHCPDCGR CFRRSRSLAN HRTTHTGEKP HQCPSCGRRF AYPSSLAIHQ RTHTGEKPYT CLECNRRFRQ RTALVIHQRI HTGEKPYPCP DCERRFSSSS RLVSHRRVHS GERPYACEHC EARFSQRSTL LQHQLLHTGE KPYPDCPDCGR AFRRSGSLAI HRSTHTEEKL HACDDCGRRF AYPSSLASHR RVHSGERPYA CDLCSKRFAQ WSHLAQHQLL HTGEKPFPCP ECGRCFRQRW SLAVHKCSPK APNCSPRS AI GGSSQRGNAH

## Product Details

---

Cross-Reactivity:	Human
Characteristics:	Antibody reactive against mammalian transfected lysate.

## Target Details

---

Target:	ZNF689
Alternative Name:	ZNF689 ( <a href="#">ZNF689 Products</a> )
Background:	Full Gene Name: zinc finger protein 689 Synonyms: DKFZp762C173,FLJ90415,TIPUH1
Gene ID:	115509
NCBI Accession:	<a href="#">NM_138447</a>

## Application Details

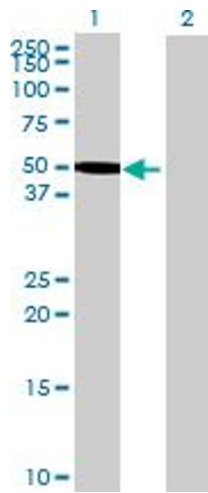
---

Application Notes:	Optimal working dilution should be determined by the investigator.
Restrictions:	For Research Use only

## Handling

---

Buffer:	In 1x PBS, pH 7.4
Handling Advice:	Aliquot to avoid repeated freezing and thawing.
Storage:	-20 °C
Storage Comment:	Store at -20°C or lower. Aliquot to avoid repeated freezing and thawing.



### Western Blotting

**Image 1.** Western Blot analysis of ZNF689 expression in transfected 293T cell line by ZNF689 MaxPab polyclonal antibody.

Lane 1: ZNF689 transfected lysate(55 KDa).

Lane 2: Non-transfected lysate.