



[Go to Product page](#)

Datasheet for ABIN530360

anti-WDFY2 antibody (AA 1-400)

1 Image

Overview

Quantity:	50 µg
Target:	WDFY2 (ZFYVE22)
Binding Specificity:	AA 1-400
Reactivity:	Human
Host:	Mouse
Clonality:	Polyclonal
Conjugate:	This WDFY2 antibody is un-conjugated
Application:	Western Blotting (WB)

Product Details

Purpose:	Mouse polyclonal antibody raised against a full-length human WDFY2 protein.
Immunogen:	WDFY2 (NP_443182.1, 1 a.a. ~ 400 a.a) full-length human protein.
Sequence:	MAAEIQPKPL TRKPILLQRM EGSQEVNMA VIVPKEEGLV SVSEDRTVRV WLKRDSGQYW PSVYHAMPSP CSCMSFNPET RRLSIGLDNG TISEFILSED YNKMTPVKNY QAHQSRVTMI LFVLELEWVL STGQDKQFAW HCSESGQLG GYRTSAVASG LQFDVETRHV FIGDHSGQVT ILKLEQENCT LVTTFRGHTG GVTALCWDPV QRVLFSGSSD HSMIMWDIGG RKGTAIELQG HNDRVQALSY AQHTRQLISC GGDGGIVVWN MDVERQETPE WLSDSDSCQKC DQPFFWNFKQ MWDSKKIGLR QHHCRCGKA VCGKCSSKRS SIPLMGFEFE VRVCDSCHEA ITDEERAPTA TFHDSKHIV HVHFDATRGTW LLTSGTDKVI KLWDMTPVVS
Cross-Reactivity:	Human
Characteristics:	Antibody reactive against mammalian transfected lysate.

Target Details

Target:	WDFY2 (ZFYVE22)
Alternative Name:	WDFY2 (ZFYVE22 Products)
Background:	Full Gene Name: WD repeat and FYVE domain containing 2 Synonyms: PROF,RP11-147H23.1,WDF2,ZFYVE22
Gene ID:	115825
NCBI Accession:	NM_052950

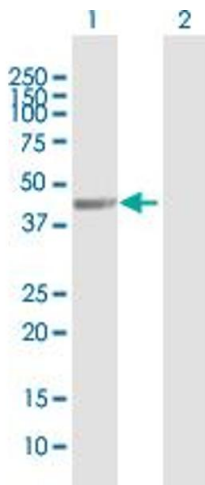
Application Details

Application Notes:	Optimal working dilution should be determined by the investigator.
Restrictions:	For Research Use only

Handling

Buffer:	In 1x PBS, pH 7.4
Handling Advice:	Aliquot to avoid repeated freezing and thawing.
Storage:	-20 °C
Storage Comment:	Store at -20°C or lower. Aliquot to avoid repeated freezing and thawing.

Images



Western Blotting

Image 1. Western Blot analysis of WDFY2 expression in transfected 293T cell line by WDFY2 MaxPab polyclonal antibody.

Lane 1: WDFY2 transfected lysate(44 kDa).

Lane 2: Non-transfected lysate.