



[Go to Product page](#)

Datasheet for ABIN530371

anti-RNF166 antibody (AA 1-237)

3 Images

Overview

| | |
|----------------------|---------------------------------------|
| Quantity: | 50 µg |
| Target: | RNF166 |
| Binding Specificity: | AA 1-237 |
| Reactivity: | Human |
| Host: | Mouse |
| Clonality: | Polyclonal |
| Conjugate: | This RNF166 antibody is un-conjugated |
| Application: | Western Blotting (WB) |

Product Details

| | |
|-------------------|--|
| Purpose: | Mouse polyclonal antibody raised against a full-length human RNF166 protein. |
| Immunogen: | RNF166 (NP_849163.1, 1 a.a. ~ 237 a.a) full-length human protein. |
| Sequence: | MAMFRSLVAS AQRQPPAGP AGGDSGLEAQ YTCPICLEVY HRPVAIGSCG HTFCGECLQP CLQVPSPLCP LCRLPFDPKK VDKATHVEKQ LSSYKAPCRG CNKKVTLAKM RVHISSCLKV QEQMANCPKF VPVPTSQPI PSNIPNRSTF ACPYCGARNL DQQLVKHCV ESHRSDPNRV VCPICSAMPW GDPSYKSANF LQHLLHRHKF SYDTFVDYSI DEEAAFQAAL ALSLSEN |
| Cross-Reactivity: | Human, Mouse |
| Characteristics: | Antibody reactive against mammalian transfected lysate. |

Target Details

| | |
|---------|--------|
| Target: | RNF166 |
|---------|--------|

Target Details

| | |
|-------------------|---|
| Alternative Name: | RNF166 (RNF166 Products) |
| Background: | Full Gene Name: ring finger protein 166 Synonyms: MGC14381,MGC2647 |
| Gene ID: | 115992 |
| NCBI Accession: | NM_178841 |

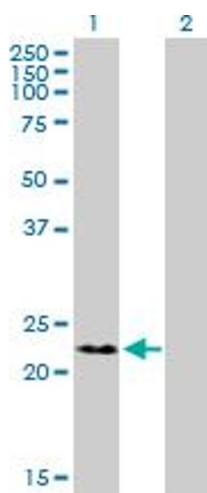
Application Details

| | |
|--------------------|--|
| Application Notes: | Optimal working dilution should be determined by the investigator. |
| Restrictions: | For Research Use only |

Handling

| | |
|------------------|--|
| Buffer: | In 1x PBS, pH 7.4 |
| Handling Advice: | Aliquot to avoid repeated freezing and thawing. |
| Storage: | -20 °C |
| Storage Comment: | Store at -20°C or lower. Aliquot to avoid repeated freezing and thawing. |

Images

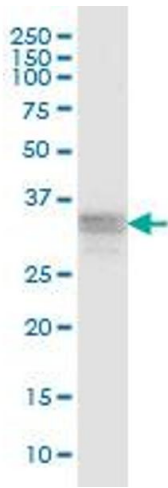


Western Blotting

Image 1. Western Blot analysis of RNF166 expression in transfected 293T cell line by RNF166 MaxPab polyclonal antibody.

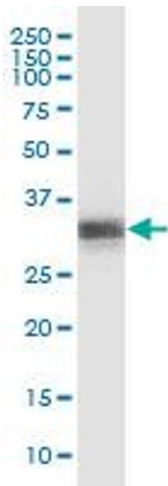
Lane 1: RNF166 transfected lysate(26.07 KDa).

Lane 2: Non-transfected lysate.



Western Blotting

Image 2. RNF166 MaxPab polyclonal antibody. Western Blot analysis of RNF166 expression in Raw 264.7.



Western Blotting

Image 3. RNF166 MaxPab polyclonal antibody. Western Blot analysis of RNF166 expression in MCF-7.