



[Go to Product page](#)

Datasheet for ABIN530373
anti-BATF2 antibody (AA 1-189)

1 Image

Overview

Quantity:	50 µg
Target:	BATF2
Binding Specificity:	AA 1-189
Reactivity:	Human
Host:	Mouse
Clonality:	Polyclonal
Conjugate:	This BATF2 antibody is un-conjugated
Application:	Western Blotting (WB)

Product Details

Purpose:	Mouse polyclonal antibody raised against a full-length human BATF2 protein.
Immunogen:	BATF2 (AAH12330, 1 a.a. ~ 189 a.a) full-length human protein.
Sequence:	MDCASCSAPG LLGCWDQAEG LLGPGPQGQH GCREQLELFQ TPGSCYPAQP LSPGPQPHDS PSLLQCPLPS LSLGPAVVAE PPVQLSPSPL LFASHTGSSL QGSSSKLSAL QPSLTAQTAP PQPLELEHPT RGKLGSSPDN PSSALGLARL QSREHKPALS AATWQGLVVD PSPHPLLAFP LLSSAQVHF
Cross-Reactivity:	Human
Characteristics:	Antibody reactive against mammalian transfected lysate.

Target Details

Target:	BATF2
---------	-------

Target Details

Alternative Name:	BATF2 (BATF2 Products)
Background:	Full Gene Name: basic leucine zipper transcription factor, ATF-like 2 Synonyms: MGC20410
Gene ID:	116071

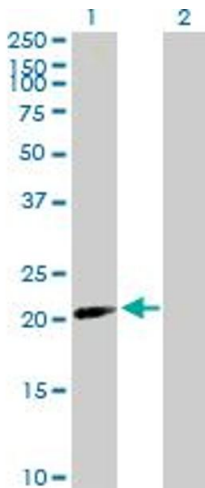
Application Details

Application Notes:	Optimal working dilution should be determined by the investigator.
Restrictions:	For Research Use only

Handling

Buffer:	In 1x PBS, pH 7.4
Handling Advice:	Aliquot to avoid repeated freezing and thawing.
Storage:	-20 °C
Storage Comment:	Store at -20°C or lower. Aliquot to avoid repeated freezing and thawing.

Images



Western Blotting

Image 1. Western Blot analysis of BATF2 expression in transfected 293T cell line by BATF2 MaxPab polyclonal antibody.

Lane 1: MGC20410 transfected lysate(20.9 kDa).

Lane 2: Non-transfected lysate.