



[Go to Product page](#)

Datasheet for ABIN530376

anti-SLC22A12 antibody (AA 281-349)

3 Images

2 Publications

Overview

| | |
|----------------------|---|
| Quantity: | 100 µg |
| Target: | SLC22A12 |
| Binding Specificity: | AA 281-349 |
| Reactivity: | Human |
| Host: | Mouse |
| Clonality: | Monoclonal |
| Conjugate: | This SLC22A12 antibody is un-conjugated |
| Application: | Western Blotting (WB), ELISA |

Product Details

| | |
|-------------------|---|
| Purpose: | Mouse monoclonal antibody raised against a partial recombinant SLC22A12. |
| Immunogen: | SLC22A12 (NP_653186.2, 281 a.a. ~ 349 a.a) partial recombinant protein with GST tag. MW of the GST tag alone is 26 KDa. |
| Sequence: | ESARWLLTTG RLDWGLQELW RVAANGKGA VQDTLTPEVL LSAMREELSM GQPPASLGTL LRMPGLRFR |
| Clone: | 2B5 |
| Isotype: | IgG2a |
| Cross-Reactivity: | Human |
| Characteristics: | Antibody Reactive Against Recombinant Protein. |

Target Details

| | |
|-------------------|--|
| Target: | SLC22A12 |
| Alternative Name: | SLC22A12 (SLC22A12 Products) |
| Background: | Full Gene Name: solute carrier family 22 (organic anion/urate transporter), member 12 Synonyms: OAT4L,RST,URAT1 |
| Gene ID: | 116085 |
| NCBI Accession: | NM_144585 |

Application Details

| | |
|--------------------|--|
| Application Notes: | Optimal working dilution should be determined by the investigator. |
| Restrictions: | For Research Use only |

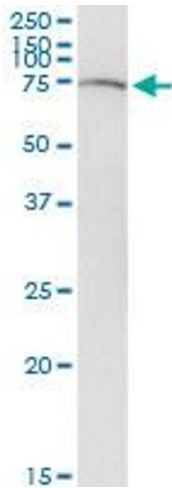
Handling

| | |
|------------------|--|
| Buffer: | In 1x PBS, pH 7.4 |
| Handling Advice: | Aliquot to avoid repeated freezing and thawing. |
| Storage: | -20 °C |
| Storage Comment: | Store at -20°C or lower. Aliquot to avoid repeated freezing and thawing. |

Publications

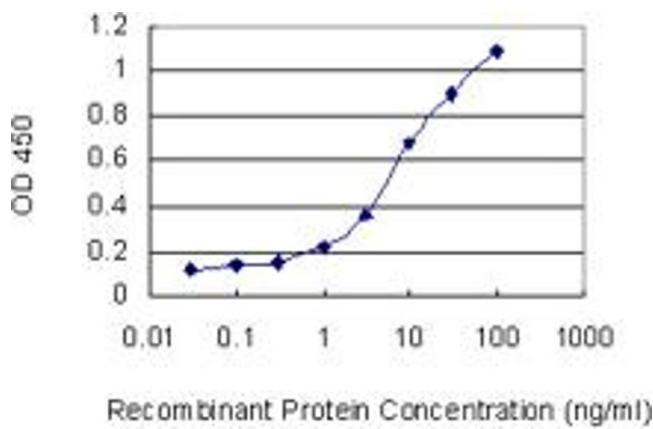
Product cited in: Yan, Zhang, Huang, Shen, Han: "OIT3 deficiency impairs uric acid reabsorption in renal tubule." in: **FEBS letters**, Vol. 586, Issue 6, pp. 760-5, (2012) ([PubMed](#)).

Roncal-Jimenez, Lanaspa, Rivard, Nakagawa, Sanchez-Lozada, Jalal, Andres-Hernando, Tanabe, Madero, Li, Cicerchi, Mc Fann, Sautin, Johnson: "Sucrose induces fatty liver and pancreatic inflammation in male breeder rats independent of excess energy intake." in: **Metabolism: clinical and experimental**, Vol. 60, Issue 9, pp. 1259-70, (2011) ([PubMed](#)).



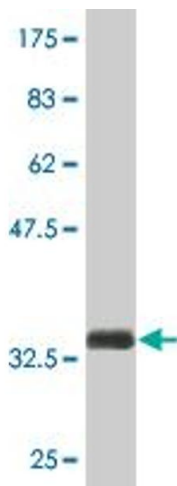
Western Blotting

Image 1. SLC22A12 monoclonal antibody (M02), clone 2B5. Western Blot analysis of SLC22A12 expression in human stomach.



ELISA

Image 2. Detection limit for recombinant GST tagged SLC22A12 is 0.3 ng/ml as a capture antibody.



Western Blotting

Image 3. Western Blot detection against Immunogen (33.33 KDa) .