



Datasheet for ABIN530401
anti-TSEN15 antibody (AA 1-171)



[Go to Product page](#)

3 Images

Overview

Quantity:	100 µL
Target:	TSEN15
Binding Specificity:	AA 1-171
Reactivity:	Human
Host:	Rabbit
Clonality:	Polyclonal
Conjugate:	This TSEN15 antibody is un-conjugated
Application:	Western Blotting (WB), Immunoprecipitation (IP)

Product Details

Purpose:	Rabbit polyclonal antibody raised against a full-length human TSEN15 protein.
Immunogen:	TSEN15 (NP_443197.1, 1 a.a. ~ 171 a.a) full-length human protein.
Sequence:	MEERGDSEPT PGCSGLGPGG VRGFGDGGGA PSWAPEDAWM GTHPKYLEMM ELDIGDATQV YVAFLVYLDL MESKSWHEVN CVGLPELQLI CLVGTEIEGE GLQTVVPTPI TASLSHNRIR EILKASRKLQ GDPDLPMSFT LAIVESDSTI VYYKLTDFGM LPDPQNISLR R
Cross-Reactivity:	Human
Characteristics:	Antibody reactive against mammalian transfected lysate.

Target Details

Target:	TSEN15
---------	--------

Target Details

Alternative Name:	TSEN15 (TSEN15 Products)
Background:	Full Gene Name: tRNA splicing endonuclease 15 homolog (S. cerevisiae) Synonyms: C1orf19, sen15
Gene ID:	116461
NCBI Accession:	NM_052965

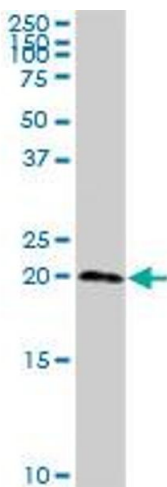
Application Details

Application Notes:	Optimal working dilution should be determined by the investigator.
Restrictions:	For Research Use only

Handling

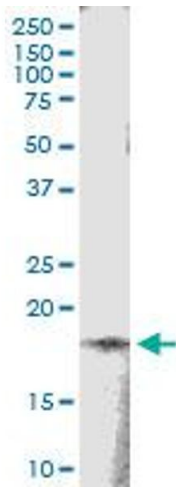
Format:	Liquid
Buffer:	No additive
Preservative:	Without preservative
Handling Advice:	Aliquot to avoid repeated freezing and thawing.
Storage:	-20 °C
Storage Comment:	Store at -20°C or lower. Aliquot to avoid repeated freezing and thawing.

Images



Western Blotting

Image 1. C1orf19 MaxPab rabbit polyclonal antibody. Western Blot analysis of C1orf19 expression in human kidney.



Immunoprecipitation

Image 2. Immunoprecipitation of TSEN15 transfected lysate using anti-TSEN15 MaxPab rabbit polyclonal antibody and Protein A Magnetic Bead , and immunoblotted with TSEN15 MaxPab mouse polyclonal antibody (B01) .



Western Blotting

Image 3. Western Blot analysis of TSEN15 expression in transfected 293T cell line by TSEN15 MaxPab polyclonal antibody.

Lane 1: TSEN15 transfected lysate(18.6 KDa).

Lane 2: Non-transfected lysate.