

Datasheet for ABIN530421
anti-SH2D1B antibody (AA 1-132)[Go to Product page](#)

2 Images

Overview

Quantity:	100 µg
Target:	SH2D1B
Binding Specificity:	AA 1-132
Reactivity:	Human
Host:	Rabbit
Clonality:	Polyclonal
Conjugate:	This SH2D1B antibody is un-conjugated
Application:	Western Blotting (WB)

Product Details

Purpose:	Rabbit polyclonal antibody raised against a full-length human SH2D1B protein.
Immunogen:	SH2D1B (NP_444512.2, 1 a.a. ~ 132 a.a) full-length human protein.
Sequence:	MDLPYYHGRL TKQDCETLLL KEGVDGNFLL RDSIESIPGVL CLCVSFKNIV YTYRIFREKH GYYRIQTAEG SPKQVFPSLK ELISKFEKPN QGMVVHLLKP IKRTSPSLRW RGLKLELETF VNSNSDYVDV LP
Cross-Reactivity:	Human
Characteristics:	Antibody reactive against mammalian transfected lysate.

Target Details

Target:	SH2D1B
---------	--------

Target Details

Alternative Name:	SH2D1B (SH2D1B Products)
Background:	Full Gene Name: SH2 domain containing 1B Synonyms: EAT2
Gene ID:	117157
NCBI Accession:	NM_053282
Pathways:	Regulation of Leukocyte Mediated Immunity , Positive Regulation of Immune Effector Process

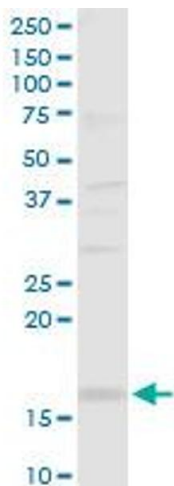
Application Details

Application Notes:	Optimal working dilution should be determined by the investigator.
Restrictions:	For Research Use only

Handling

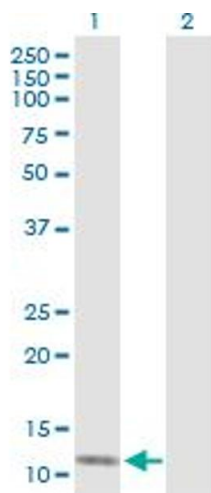
Buffer:	In 1x PBS, pH 7.4
Handling Advice:	Aliquot to avoid repeated freezing and thawing.
Storage:	-20 °C
Storage Comment:	Store at -20°C or lower. Aliquot to avoid repeated freezing and thawing.

Images



Western Blotting

Image 1. SH2D1B MaxPab rabbit polyclonal antibody.
Western Blot analysis of SH2D1B expression in A-431.



Western Blotting

Image 2. Western Blot analysis of SH2D1B expression in transfected 293T cell line by SH2D1B MaxPab polyclonal antibody.

Lane 1: SH2D1B transfected lysate(15.30 KDa).

Lane 2: Non-transfected lysate.