

Datasheet for ABIN530422
anti-SH2D1B antibody (AA 54-132)[Go to Product page](#)

2 Images

Overview

Quantity:	100 µg
Target:	SH2D1B
Binding Specificity:	AA 54-132
Reactivity:	Human
Host:	Mouse
Clonality:	Monoclonal
Conjugate:	This SH2D1B antibody is un-conjugated
Application:	ELISA, Immunoprecipitation (IP)

Product Details

Purpose:	Mouse monoclonal antibody raised against a partial recombinant SH2D1B.
Immunogen:	SH2D1B (NP_444512.2, 54 a.a. ~ 132 a.a) partial recombinant protein with GST tag. MW of the GST tag alone is 26 KDa.
Sequence:	RIFREKHGYY RIQTAEGSPK QVFPSLKELI SKFEKPNQGM VVHLLKPIKR TSPSLRWRL KLELETFVNS NSDYVDVLP
Clone:	2B4
Isotype:	IgG2a
Cross-Reactivity:	Human
Characteristics:	Antibody Reactive Against Recombinant Protein.

Target Details

Target:	SH2D1B
Alternative Name:	SH2D1B (SH2D1B Products)
Background:	Full Gene Name: SH2 domain containing 1B Synonyms: EAT2
Gene ID:	117157
NCBI Accession:	NM_053282
Pathways:	Regulation of Leukocyte Mediated Immunity , Positive Regulation of Immune Effector Process

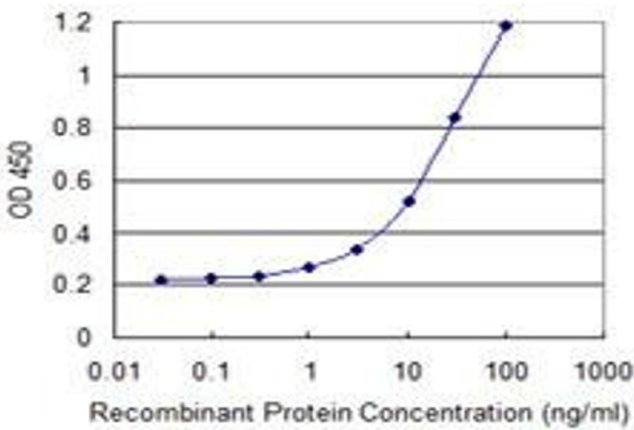
Application Details

Application Notes:	Optimal working dilution should be determined by the investigator.
Restrictions:	For Research Use only

Handling

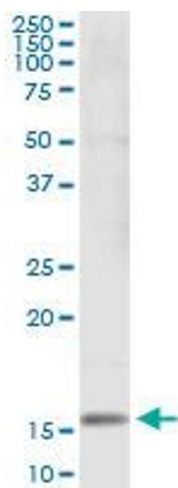
Buffer:	In 1x PBS, pH 7.4
Handling Advice:	Aliquot to avoid repeated freezing and thawing.
Storage:	-20 °C
Storage Comment:	Store at -20°C or lower. Aliquot to avoid repeated freezing and thawing.

Images



ELISA

Image 1. Detection limit for recombinant GST tagged SH2D1B is 0.3 ng/ml as a capture antibody.



Immunoprecipitation

Image 2. Immunoprecipitation of SH2D1B transfected lysate using anti-SH2D1B monoclonal antibody and Protein A Magnetic Bead , and immunoblotted with SH2D1B MaxPab rabbit polyclonal antibody.