



[Go to Product page](#)

Datasheet for ABIN530431

anti-TWIST2 antibody (AA 1-160)

2 Images

1 Publication

Overview

Quantity:	100 µg
Target:	TWIST2
Binding Specificity:	AA 1-160
Reactivity:	Human
Host:	Rabbit
Clonality:	Polyclonal
Conjugate:	This TWIST2 antibody is un-conjugated
Application:	Western Blotting (WB), Immunofluorescence (IF)

Product Details

Purpose:	Rabbit polyclonal antibody raised against a full-length human TWIST2 protein.
Immunogen:	TWIST2 (NP_476527.1, 1 a.a. ~ 160 a.a) full-length human protein.
Sequence:	MEEGSSSPVS PVDSLGTSEE ELERQPKRFG RKRRYSKKSS EDGSPTPGKR GKKGSPSAQS FEELQSQRIL ANVRERQRTQ SLNEAFAALR KIIPTLPSDK LSKIQTLKLA ARYIDFLYQV LQSDMDNKM TSCSYVAHER LSYAFSVWRM EGAWSMSASH
Cross-Reactivity:	Human
Characteristics:	Antibody reactive against mammalian transfected lysate.

Target Details

Target:	TWIST2
---------	--------

Target Details

Alternative Name:	TWIST2 (TWIST2 Products)
Background:	Full Gene Name: twist homolog 2 (Drosophila) Synonyms: DERMO1,MGC117334,bHLHa39
Gene ID:	117581
NCBI Accession:	NM_057179
Pathways:	Chromatin Binding

Application Details

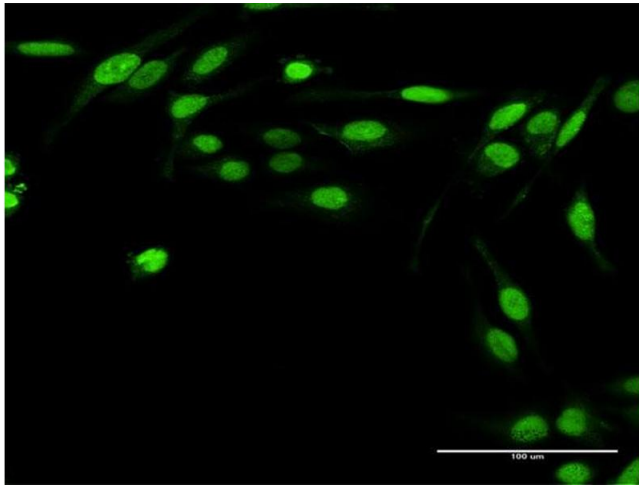
Application Notes:	Optimal working dilution should be determined by the investigator.
Restrictions:	For Research Use only

Handling

Buffer:	In 1x PBS, pH 7.4
Handling Advice:	Aliquot to avoid repeated freezing and thawing.
Storage:	-20 °C
Storage Comment:	Store at -20°C or lower. Aliquot to avoid repeated freezing and thawing.

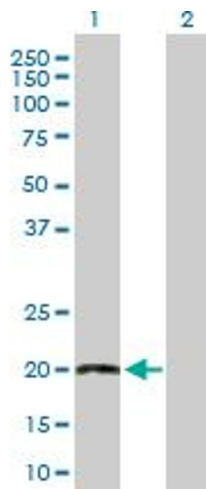
Publications

Product cited in:	Wade, Brinas, Welfare, Wicking, Farlie: "Twist2 contributes to termination of limb bud outgrowth and patterning through direct regulation of Grem1." in: Developmental biology , Vol. 370, Issue 1, pp. 145-53, (2012) (PubMed).
-------------------	---



Immunofluorescence

Image 1. Immunofluorescence of purified MaxPab antibody to TWIST2 on HeLa cell. [antibody concentration 10 µg/ml]



Western Blotting

Image 2. Western Blot analysis of TWIST2 expression in transfected 293T cell line by TWIST2 MaxPab polyclonal antibody.

Lane 1: TWIST2 transfected lysate(18.10 KDa).

Lane 2: Non-transfected lysate.