



Datasheet for ABIN530436
anti-UBE2J2 antibody (AA 1-259)



[Go to Product page](#)

1 Image

Overview

Quantity:	100 µg
Target:	UBE2J2
Binding Specificity:	AA 1-259
Reactivity:	Human
Host:	Rabbit
Clonality:	Polyclonal
Conjugate:	This UBE2J2 antibody is un-conjugated
Application:	Western Blotting (WB)

Product Details

Purpose:	Rabbit polyclonal antibody raised against a full-length human UBE2J2 protein.
Immunogen:	UBE2J2 (NP_477515.2, 1 a.a. ~ 259 a.a) full-length human protein.
Sequence:	MSSTSSKRAP TTATQRLKQD YLRIKKDPVP YICAEPLPSN ILEWHYVVRG PEMTPYEGGY YHGKLIFFPRE FPFKPPSIYM ITPNGRFKCN TRLCLSITDF HPDTWNPAAWS VSTILTGLLS FMVEKGPTLG SIETSDFTKR QLAVQSLAFN LKDKVFCELF PEVVEEIKQK QKAQDELSSR PQTLPLPDVV PDGETHLVQN GIQLLNHAP GAVPNLAGLQ QANRHHGLLG GALANLFVIV GFAAFAYTVK YVLRISIAQE
Cross-Reactivity:	Human
Characteristics:	Antibody reactive against mammalian transfected lysate.

Target Details

Target:	UBE2J2
Alternative Name:	UBE2J2 (UBE2J2 Products)
Background:	Full Gene Name: ubiquitin-conjugating enzyme E2, J2 (UBC6 homolog, yeast) Synonyms: NCUBE2,PRO2121
Gene ID:	118424
NCBI Accession:	NM_058167

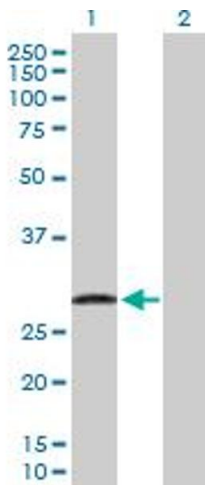
Application Details

Application Notes:	Optimal working dilution should be determined by the investigator.
Restrictions:	For Research Use only

Handling

Buffer:	In 1x PBS, pH 7.4
Handling Advice:	Aliquot to avoid repeated freezing and thawing.
Storage:	-20 °C
Storage Comment:	Store at -20°C or lower. Aliquot to avoid repeated freezing and thawing.

Images



Western Blotting

Image 1. Western Blot analysis of UBE2J2 expression in transfected 293T cell line by UBE2J2 MaxPab polyclonal antibody.

Lane 1: UBE2J2 transfected lysate(28.90 KDa).

Lane 2: Non-transfected lysate.