



[Go to Product page](#)

Datasheet for ABIN530461

anti-Lysozyme-Like 2 antibody (AA 1-194)

1 Image

Overview

Quantity:	50 µg
Target:	Lysozyme-Like 2 (LYZL2)
Binding Specificity:	AA 1-194
Reactivity:	Human
Host:	Mouse
Clonality:	Polyclonal
Conjugate:	This Lysozyme-Like 2 antibody is un-conjugated
Application:	Western Blotting (WB)

Product Details

Purpose:	Mouse polyclonal antibody raised against a full-length human LYZL2 protein.
Immunogen:	LYZL2 (NP_898881.2, 1 a.a. ~ 194 a.a) full-length human protein.
Sequence:	MQDAPLSCLS PTKWSSVSSA DSTEKSASAA GTRNLPFQFC LRQALRMKAA GILTIGCLV TGAESKIYTR CKLAKIFSRA GLDNYWGFSL GNWICMAYYE SGYNNTAQTV LDDGSIDYGI FQINSFAWCR RGKLENNHC HVACALVTD DLTAIICAK KIVKETQGMN YWQGWKKHCE GRDLSDWKGD CEVS
Cross-Reactivity:	Human
Characteristics:	Antibody reactive against mammalian transfected lysate.

Target Details

Target:	Lysozyme-Like 2 (LYZL2)
---------	-------------------------

Target Details

Alternative Name:	LYZL2 (LYZL2 Products)
Background:	Full Gene Name: lysozyme-like 2 Synonyms:
Gene ID:	119180
NCBI Accession:	NM_183058

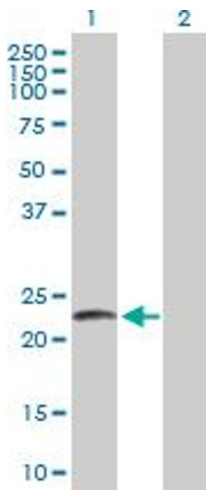
Application Details

Application Notes:	Optimal working dilution should be determined by the investigator.
Restrictions:	For Research Use only

Handling

Buffer:	In 1x PBS, pH 7.4
Handling Advice:	Aliquot to avoid repeated freezing and thawing.
Storage:	-20 °C
Storage Comment:	Store at -20°C or lower. Aliquot to avoid repeated freezing and thawing.

Images



Western Blotting

Image 1. Western Blot analysis of LYZL2 expression in transfected 293T cell line by LYZL2 MaxPab polyclonal antibody.

Lane 1: LYZL2 transfected lysate(21.34 KDa).

Lane 2: Non-transfected lysate.