



[Go to Product page](#)

Datasheet for ABIN530484

anti-Phospholipase D4 antibody (AA 1-489)

1 Image

Overview

Quantity:	50 µg
Target:	Phospholipase D4 (PLD4)
Binding Specificity:	AA 1-489
Reactivity:	Human
Host:	Mouse
Clonality:	Polyclonal
Conjugate:	This Phospholipase D4 antibody is un-conjugated
Application:	Western Blotting (WB)

Product Details

Purpose:	Mouse polyclonal antibody raised against a full-length human PLD4 protein.
Immunogen:	PLD4 (ENSP00000299538, 1 a.a. ~ 489 a.a) full-length human protein.
Sequence:	MPPRRPWDRE AGTLQVLGAL AVLWLG SVAL ICLLWQVPRP PTWGQVQPKD VPRSWEHGSS PAWEPLEAEA RQQRDSCQLV LVESIPQDLP SAAGSPSAQP LGQAWLQLLD TAQESVHVAS YYWSLTGPDI GVNDSSSQLG EALLQKLQQL LGRNISLAVA TSSPTLARTS TDLQVLAARG AHVRQVPMGR LTRGVLH SKF WVDGRHIYM GSANMDWRSL TQVKELGAVI YNCSHLAQDL EKTFQTYWVL GVPKAVLPKT WPQNFSSHFN RFQPFHGLFD GVPTTAYFSA SPPALCPQGR TRDLEALLAV MGSAQEFIYA SVM EYFP TTR FSHPPRYWPV LDNALRAAAF GKGVRVRLLV GCGLNTDPTM FPYLRSLQAL SNPAANVSD VKVFIVPVGN HSNIPFSRVN HSKFMVTEKA AYIGTSNWSE DYFSSTAGVG LVVTQSPGAQ PAGATVQEQL RQLFERDWSS RYAVGLDGQA PGQDCVWQG

Product Details

Cross-Reactivity:	Human
Characteristics:	Antibody reactive against mammalian transfected lysate.

Target Details

Target:	Phospholipase D4 (PLD4)
Alternative Name:	PLD4 (PLD4 Products)
Background:	Full Gene Name: phospholipase D family, member 4 Synonyms: C14orf175
Gene ID:	122618

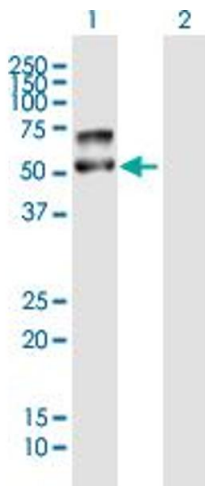
Application Details

Application Notes:	Optimal working dilution should be determined by the investigator.
Restrictions:	For Research Use only

Handling

Buffer:	In 1x PBS, pH 7.4
Handling Advice:	Aliquot to avoid repeated freezing and thawing.
Storage:	-20 °C
Storage Comment:	Store at -20°C or lower. Aliquot to avoid repeated freezing and thawing.

Images



Western Blotting

Image 1. Western Blot analysis of PLD4 expression in transfected 293T cell line by PLD4 MaxPab polyclonal antibody.

Lane 1: PLD4 transfected lysate(53.79 KDa).

Lane 2: Non-transfected lysate.