

Datasheet for ABIN530531  
**anti-MSI2 antibody (AA 1-85)**



[Go to Product page](#)

1 Image

Overview

Quantity:	100 µg
Target:	MSI2
Binding Specificity:	AA 1-85
Reactivity:	Human
Host:	Mouse
Clonality:	Monoclonal
Conjugate:	This MSI2 antibody is un-conjugated
Application:	Western Blotting (WB), ELISA

Product Details

Purpose:	Mouse monoclonal antibody raised against a partial recombinant MSI2.
Immunogen:	MSI2 (NP_620412, 1 a.a. ~ 85 a.a) partial recombinant protein with GST tag. MW of the GST tag alone is 26 KDa.
Sequence:	MEANGSQGTS GSANDSQHDP GKMFIGGLSW QTSPDSLRY FSKFGEIREC MVMRDPTTKR SRGFGFVTFA DPASVDKVLG QPHHE
Clone:	1F2
Isotype:	IgG2b
Cross-Reactivity:	Human
Characteristics:	Antibody Reactive Against Recombinant Protein.

## Target Details

Target:	MSI2
Alternative Name:	MSI2 ( <a href="#">MSI2 Products</a> )
Background:	Full Gene Name: musashi homolog 2 (Drosophila) Synonyms: FLJ36569,MGC3245,MSI2H
Gene ID:	124540
NCBI Accession:	<a href="#">NM_138962</a>

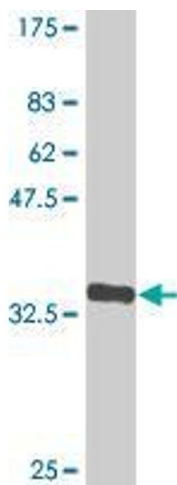
## Application Details

Application Notes:	Optimal working dilution should be determined by the investigator.
Restrictions:	For Research Use only

## Handling

Buffer:	In 1x PBS, pH 7.4
Handling Advice:	Aliquot to avoid repeated freezing and thawing.
Storage:	-20 °C
Storage Comment:	Store at -20°C or lower. Aliquot to avoid repeated freezing and thawing.

## Images



### Western Blotting

**Image 1.** Western Blot detection against Immunogen (35.35 KDa) .