



[Go to Product page](#)

Datasheet for ABIN530533

anti-CANT1 antibody (AA 1-401)

5 Images

Overview

Quantity:	100 µL
Target:	CANT1
Binding Specificity:	AA 1-401
Reactivity:	Human
Host:	Rabbit
Clonality:	Polyclonal
Conjugate:	This CANT1 antibody is un-conjugated
Application:	Western Blotting (WB), Immunoprecipitation (IP)

Product Details

Purpose:	Rabbit polyclonal antibody raised against a full-length human CANT1 protein.
Immunogen:	CANT1 (NP_620148.1, 1 a.a. ~ 401 a.a) full-length human protein.
Sequence:	MPVQLSEHPE WNESMHSRLR SVGGLPVLAS MTKAADPRFR PRWKVILTFF VGAAILWLLC SHRPAPGRPP THNAHNWRLG QAPANWYNDT YPLSPPQRTP AGIRYRIAVI ADLDTESRAQ EENTWFSYLK KGYLTLSDSG DKVAVEWDKD HGVLESHLAE KGRGMELSDL IVFNGKLYSV DDRTGVVYQI EGSKAVPWVI LSDGDGTVEK GFKAEWLAVK DERLYVGGLG KEWTTTTGDV VNENPEWVKV VGYKGSVDHE NWVSNYNALR AAAGIQPPGY LIHESACWSD TLQRWFFLPR RASQERYSEK DDERKGANLL LSASPDFGDI AVSHVGAVVP THGFSSFKFI PNTDDQIIVA LKSEEDSGRV ASYIMAFTLD GRFLLPETKI GSVKYEGIEF I
Cross-Reactivity:	Human, Mouse
Characteristics:	Antibody reactive against mammalian transfected lysate.

Target Details

Target:	CANT1
Alternative Name:	CANT1 (CANT1 Products)
Background:	Full Gene Name: calcium activated nucleotidase 1 Synonyms: SCAN-1,SHAPY
Gene ID:	124583
NCBI Accession:	NM_138793

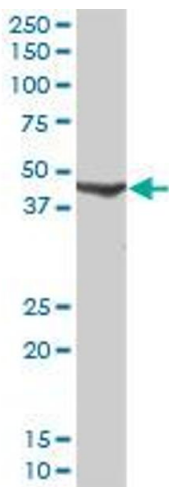
Application Details

Application Notes:	Optimal working dilution should be determined by the investigator.
Restrictions:	For Research Use only

Handling

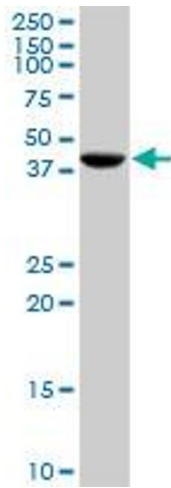
Format:	Liquid
Buffer:	No additive
Preservative:	Without preservative
Handling Advice:	Aliquot to avoid repeated freezing and thawing.
Storage:	-20 °C
Storage Comment:	Store at -20°C or lower. Aliquot to avoid repeated freezing and thawing.

Images



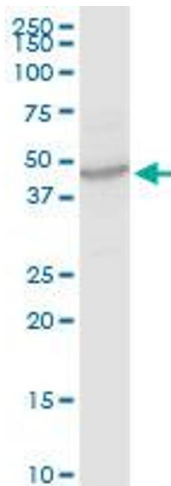
Western Blotting

Image 1. CANT1 MaxPab rabbit polyclonal antibody.
Western Blot analysis of CANT1 expression in human liver.



Western Blotting

Image 2. CANT1 MaxPab rabbit polyclonal antibody. Western Blot analysis of CANT1 expression in mouse spleen.



Western Blotting

Image 3. CANT1 MaxPab rabbit polyclonal antibody. Western Blot analysis of CANT1 expression in HeLa.

Please check the [product details page](#) for more images. Overall 5 images are available for ABIN530533.