



Datasheet for ABIN530543
anti-CNTD1 antibody (AA 1-330)



[Go to Product page](#)

1 Image

Overview

Quantity:	50 µg
Target:	CNTD1
Binding Specificity:	AA 1-330
Reactivity:	Human
Host:	Mouse
Clonality:	Polyclonal
Conjugate:	This CNTD1 antibody is un-conjugated
Application:	Western Blotting (WB)

Product Details

Purpose:	Mouse polyclonal antibody raised against a full-length human CNTD1 protein.
Immunogen:	CNTD1 (AAH26187.1, 1 a.a. ~ 330 a.a) full-length human protein.
Sequence:	MDGPMRPRSA SLVDFQFGVV ATETIEDALL HLAQQNEQAV REASGRLGRF REPQIVEFVF LLSEQWCLEK SVSYQAVEIL ERFMVKQAEN ICRQATIQPR DNKRESQNWR ALKQQLVNKF TLRLVSCVQL ASKLSFRNKI ISNITVLNFL QALGYLHTKE ELLESELDVL KSLNFRINLP TPLAYVETLL EVLGYNGLV PAMRLHATCL TLLDLVYLLH EPIYESLLRA SIENSTPSQL QGEKFTSVKE DFMLLAVGII AASAFIQNHE CWSQVVGHLQ SITGIALASI AEFSYAILTH GVGANTPGRQ QSIPPHLAAR ALKTVASSNT
Cross-Reactivity:	Human
Characteristics:	Antibody reactive against mammalian transfected lysate.

Target Details

Target:	CNTD1
Alternative Name:	CNTD1 (CNTD1 Products)
Background:	Full Gene Name: cyclin N-terminal domain containing 1 Synonyms: CNTD,FLJ40137
Gene ID:	124817

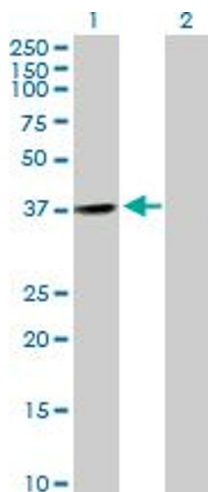
Application Details

Application Notes:	Optimal working dilution should be determined by the investigator.
Restrictions:	For Research Use only

Handling

Buffer:	In 1x PBS, pH 7.4
Handling Advice:	Aliquot to avoid repeated freezing and thawing.
Storage:	-20 °C
Storage Comment:	Store at -20°C or lower. Aliquot to avoid repeated freezing and thawing.

Images



Western Blotting

Image 1. Western Blot analysis of CNTD1 expression in transfected 293T cell line by CNTD1 MaxPab polyclonal antibody.

Lane 1: CNTD transfected lysate(36.3 KDa).

Lane 2: Non-transfected lysate.