



[Go to Product page](#)

Datasheet for ABIN530564

## anti-Calreticulin 3 antibody (AA 1-384)

### 3 Images

#### Overview

Quantity:	100 µL
Target:	Calreticulin 3 (CALR3)
Binding Specificity:	AA 1-384
Reactivity:	Human
Host:	Rabbit
Clonality:	Polyclonal
Conjugate:	This Calreticulin 3 antibody is un-conjugated
Application:	Western Blotting (WB), Immunoprecipitation (IP)

#### Product Details

Purpose:	Rabbit polyclonal antibody raised against a full-length human CALR3 protein.
Immunogen:	CALR3 (NP_659483.1, 1 a.a. ~ 384 a.a) full-length human protein.
Sequence:	MARALVQFWA ICMLRVALAT VYFQEEFLDG EHWRNRWLQS TNDSRFGHFR LSSGKFYGHK EKDKGLQTTQ NGRFYAISAR FKPF SNKGKT LVIQYTVKHE QKMDCGGGYI KVFPADIDQK NLNGKSQYYI MFGPDICGFD IKKVHVLHF KNKYHENKKL IRCKVDGFTH LYTLILRPDL SYDVKIDGQS IESGSIEYDW NLTSLKKETS PAESKDWEQT KDNKAQDWEK HFLDASTSKQ SDWNGDLGDG WPAPMLQKPP YQDGLKPEGI HKDVWLHRKM KNTDYLTQYD LSEFENIGAI GLELWQVRSG TIFDNFLITD DEEYADNFGK ATWGETKGPE REMDAIQAKE EMKKAREEEE EELLSGKINR HEHYFNQFHR RNEL
Cross-Reactivity:	Human, Mouse
Characteristics:	Antibody reactive against mammalian transfected lysate.

## Target Details

Target:	Calreticulin 3 (CALR3)
Alternative Name:	CALR3 ( <a href="#">CALR3 Products</a> )
Background:	Full Gene Name: calreticulin 3 Synonyms: CRT2,FLJ25355,MGC26577
Gene ID:	125972
NCBI Accession:	<a href="#">NM_145046</a>
Pathways:	<a href="#">Activation of Innate immune Response</a>

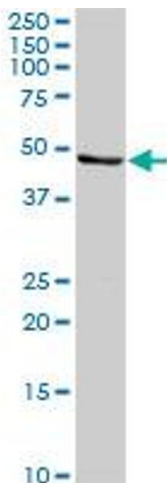
## Application Details

Application Notes:	Optimal working dilution should be determined by the investigator.
Restrictions:	For Research Use only

## Handling

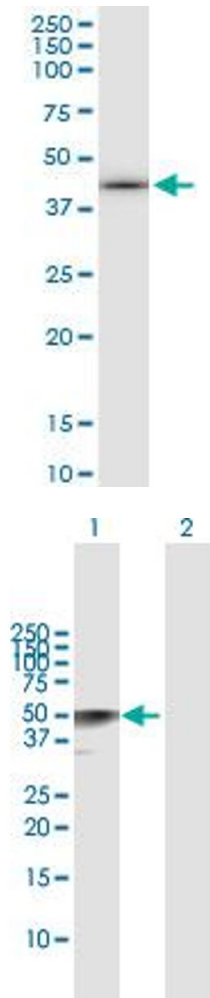
Format:	Liquid
Buffer:	No additive
Preservative:	Without preservative
Handling Advice:	Aliquot to avoid repeated freezing and thawing.
Storage:	-20 °C
Storage Comment:	Store at -20°C or lower. Aliquot to avoid repeated freezing and thawing.

## Images



### Western Blotting

**Image 1.** CALR3 MaxPab rabbit polyclonal antibody.  
Western Blot analysis of CALR3 expression in mouse lung.



### Immunoprecipitation

**Image 2.** Immunoprecipitation of CALR3 transfected lysate using anti-CALR3 MaxPab rabbit polyclonal antibody and Protein A Magnetic Bead , and immunoblotted with CALR3 purified MaxPab mouse polyclonal antibody (B01P) .

### Western Blotting

**Image 3.** Western Blot analysis of CALR3 expression in transfected 293T cell line by CALR3 MaxPab polyclonal antibody.

Lane 1: CALR3 transfected lysate(45 KDa).

Lane 2: Non-transfected lysate.