

Datasheet for ABIN530580  
**anti-ATP6V1G3i antibody (AA 1-118)**[Go to Product page](#)

## 1 Image

## Overview

Quantity:	50 µg
Target:	ATP6V1G3i (ATP6V1G3)
Binding Specificity:	AA 1-118
Reactivity:	Human
Host:	Mouse
Clonality:	Polyclonal
Conjugate:	This ATP6V1G3i antibody is un-conjugated
Application:	Western Blotting (WB)

## Product Details

Purpose:	Mouse polyclonal antibody raised against a full-length human ATP6V1G3 protein.
Immunogen:	ATP6V1G3 (NP_573569.1, 1 a.a. ~ 118 a.a) full-length human protein.
Sequence:	MTSQSQGIHQ LLQAEKRAKD KLEEAKKRKG KRLKQAKEEA MVEIDQYRMQ RDKEFRLKQS KIMGSQNNLS DEIEEQLTGLK IQELNGHYNK YMESVMNQLL SMVCDMKPEI HVNYRATN
Cross-Reactivity:	Human
Characteristics:	Antibody reactive against mammalian transfected lysate.

## Target Details

Target:	ATP6V1G3i (ATP6V1G3)
Alternative Name:	ATP6V1G3 ( <a href="#">ATP6V1G3 Products</a> )

Target Details

Background:	Full Gene Name: ATPase, H+ transporting, lysosomal 13 kDa, V1 subunit G3 Synonyms: ATP6G3,MGC119810,MGC119813,Vma10
Gene ID:	127124
NCBI Accession:	<a href="#">NM_133262</a>
Pathways:	<a href="#">Transition Metal Ion Homeostasis</a> , <a href="#">Proton Transport</a>

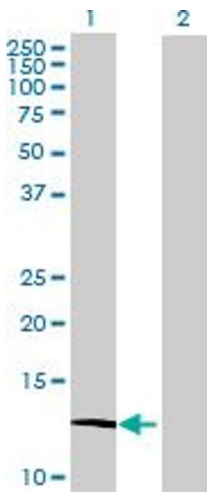
Application Details

Application Notes:	Optimal working dilution should be determined by the investigator.
Restrictions:	For Research Use only

Handling

Buffer:	In 1x PBS, pH 7.4
Handling Advice:	Aliquot to avoid repeated freezing and thawing.
Storage:	-20 °C
Storage Comment:	Store at -20°C or lower. Aliquot to avoid repeated freezing and thawing.

Images



**Western Blotting**

**Image 1.** Western Blot analysis of ATP6V1G3 expression in transfected 293T cell line by ATP6V1G3 MaxPab polyclonal antibody.

Lane 1: ATP6V1G3 transfected lysate(12.98 KDa).

Lane 2: Non-transfected lysate.