



Datasheet for ABIN530581
anti-ATP6V1G3i antibody (AA 38-118)



[Go to Product page](#)

2 Images

Overview

Quantity:	100 µg
Target:	ATP6V1G3i (ATP6V1G3)
Binding Specificity:	AA 38-118
Reactivity:	Human
Host:	Mouse
Clonality:	Monoclonal
Conjugate:	This ATP6V1G3i antibody is un-conjugated
Application:	Western Blotting (WB), ELISA

Product Details

Purpose:	Mouse monoclonal antibody raised against a partial recombinant ATP6V1G3.
Immunogen:	ATP6V1G3 (NP_573569, 38 a.a. ~ 118 a.a) partial recombinant protein with GST tag. MW of the GST tag alone is 26 KDa.
Sequence:	EEAMVEIDQY RMQRDKEFRL KQSKIMGSQN NLSDEIEEQT LGKIQELNGH YNKYMESVMN QLLSMVCDMK PEIHVNYRAT N
Clone:	3A5
Isotype:	IgG1
Cross-Reactivity:	Human
Characteristics:	Antibody Reactive Against Recombinant Protein.

Target Details

Target:	ATP6V1G3i (ATP6V1G3)
Alternative Name:	ATP6V1G3 (ATP6V1G3 Products)
Background:	Full Gene Name: ATPase, H ⁺ transporting, lysosomal 13 kDa, V1 subunit G3 Synonyms: ATP6G3,MGC119810,MGC119813,Vma10
Gene ID:	127124
NCBI Accession:	NM_133262
Pathways:	Transition Metal Ion Homeostasis , Proton Transport

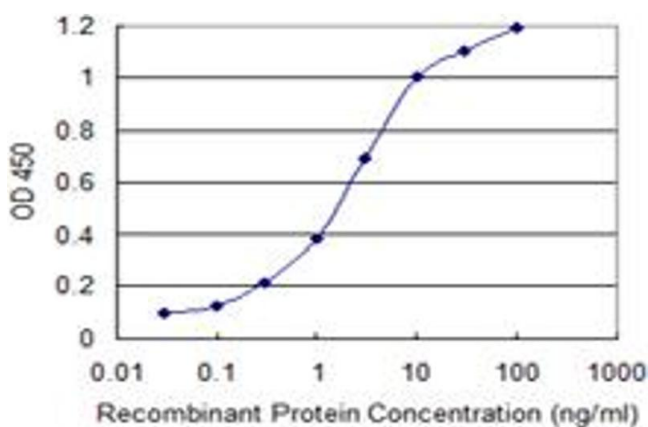
Application Details

Application Notes:	Optimal working dilution should be determined by the investigator.
Restrictions:	For Research Use only

Handling

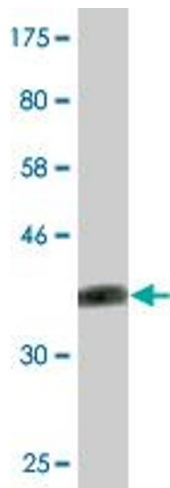
Buffer:	In 1x PBS, pH 7.4
Handling Advice:	Aliquot to avoid repeated freezing and thawing.
Storage:	-20 °C
Storage Comment:	Store at -20°C or lower. Aliquot to avoid repeated freezing and thawing.

Images



ELISA

Image 1. Detection limit for recombinant GST tagged ATP6V1G3 is 0.03 ng/ml as a capture antibody.



Western Blotting

Image 2. Western Blot detection against Immunogen (34.65 kDa).