



[Go to Product page](#)

Datasheet for ABIN530603
anti-VSTM2L antibody (AA 1-204)

1 Image

Overview

Quantity:	50 µg
Target:	VSTM2L
Binding Specificity:	AA 1-204
Reactivity:	Human
Host:	Mouse
Clonality:	Polyclonal
Conjugate:	This VSTM2L antibody is un-conjugated
Application:	Western Blotting (WB)

Product Details

Purpose:	Mouse polyclonal antibody raised against a full-length human C20orf102 protein.
Immunogen:	C20orf102 (NP_542174.1, 1 a.a. ~ 204 a.a) full-length human protein.
Sequence:	MGAPLAVALG ALHYLALFLQ LGGATRPAGH APWDNHVSGH ALFTETPHDM TARTGEDVEM ACSFRRGSGSP SYSLEIQWWY VRSHRDWTDK QAWASNQLKA SQQEDAGKEA TKISVVKVVG SNISHKLRLS RVKPTDEGTY ECRVIDFSDG KARHHKVKAY LRVQPGENSV LHLPEAPPAA PAPPPKPGK ELKRSDVQE ACSL
Cross-Reactivity:	Human
Characteristics:	Antibody reactive against mammalian transfected lysate.

Target Details

Target:	VSTM2L
---------	--------

Target Details

Alternative Name:	VSTM2L (VSTM2L Products)
Background:	Full Gene Name: V-set and transmembrane domain containing 2 like Synonyms: C20orf102,dJ1118M15.2
Gene ID:	128434
NCBI Accession:	NM_080607

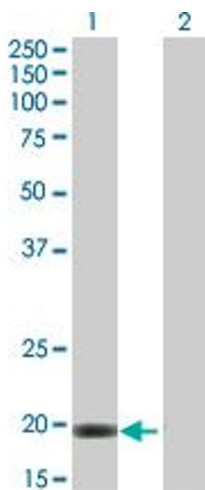
Application Details

Application Notes:	Optimal working dilution should be determined by the investigator.
Restrictions:	For Research Use only

Handling

Buffer:	In 1x PBS, pH 7.4
Handling Advice:	Aliquot to avoid repeated freezing and thawing.
Storage:	-20 °C
Storage Comment:	Store at -20°C or lower. Aliquot to avoid repeated freezing and thawing.

Images



Western Blotting

Image 1. Western Blot analysis of VSTM2L expression in transfected 293T cell line by VSTM2L MaxPab polyclonal antibody.

Lane 1: C20orf102 transfected lysate(22.44 KDa).

Lane 2: Non-transfected lysate.