



Datasheet for ABIN530604
anti-VSTM2L antibody (AA 1-204)



[Go to Product page](#)

3 Images

Overview

| | |
|----------------------|---|
| Quantity: | 100 µL |
| Target: | VSTM2L |
| Binding Specificity: | AA 1-204 |
| Reactivity: | Human |
| Host: | Rabbit |
| Clonality: | Polyclonal |
| Conjugate: | This VSTM2L antibody is un-conjugated |
| Application: | Western Blotting (WB), Immunoprecipitation (IP) |

Product Details

| | |
|-------------------|---|
| Purpose: | Rabbit polyclonal antibody raised against a full-length human VSTM2L protein. |
| Immunogen: | VSTM2L (NP_542174.1, 1 a.a. ~ 204 a.a) full-length human protein. |
| Sequence: | MGAPLAVALG ALHYLALFLQ LGGATRPAGH APWDNHVSGH ALFTETPHDM TARTGEDVEM ACSFRRGSGSP SYSLEIQWWY VRSHRDWTDK QAWASNLKA SQQEDAGKEA TKISVVKVVG SNISHKLRLS RVKPTDEGTY ECRVIDFSDG KARHHKVKAY LRVQPGENSV LHLPEAPPAA PAPPPKPGK ELKRSDVQE ACSL |
| Cross-Reactivity: | Human |
| Characteristics: | Antibody reactive against mammalian transfected lysate. |

Target Details

| | |
|---------|--------|
| Target: | VSTM2L |
|---------|--------|

Target Details

| | |
|-------------------|---|
| Alternative Name: | VSTM2L (VSTM2L Products) |
| Background: | Full Gene Name: V-set and transmembrane domain containing 2 like Synonyms: C20orf102,dJ1118M15.2 |
| Gene ID: | 128434 |
| NCBI Accession: | NM_080607 |

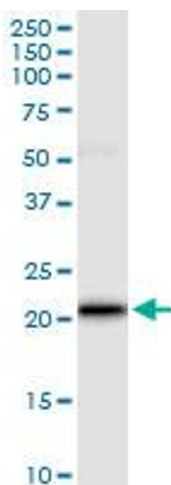
Application Details

| | |
|--------------------|--|
| Application Notes: | Optimal working dilution should be determined by the investigator. |
| Restrictions: | For Research Use only |

Handling

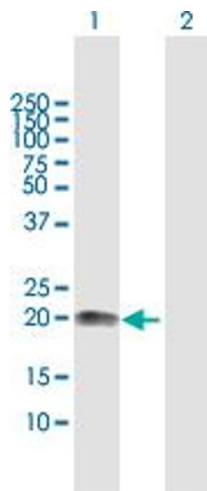
| | |
|------------------|--|
| Format: | Liquid |
| Buffer: | No additive |
| Preservative: | Without preservative |
| Handling Advice: | Aliquot to avoid repeated freezing and thawing. |
| Storage: | -20 °C |
| Storage Comment: | Store at -20°C or lower. Aliquot to avoid repeated freezing and thawing. |

Images



Immunoprecipitation

Image 1. Immunoprecipitation of VSTM2L transfected lysate using anti-VSTM2L MaxPab rabbit polyclonal antibody and Protein A Magnetic Bead, and immunoblotted with VSTM2L purified MaxPab mouse polyclonal antibody (B01P).

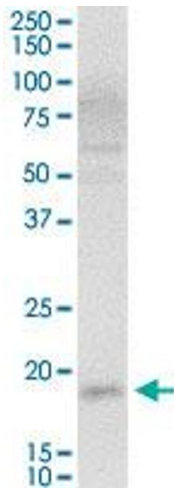


Western Blotting

Image 2. Western Blot analysis of VSTM2L expression in transfected 293T cell line by VSTM2L MaxPab polyclonal antibody.

Lane 1: VSTM2L transfected lysate(22.3 KDa).

Lane 2: Non-transfected lysate.



Western Blotting

Image 3. VSTM2L MaxPab rabbit polyclonal antibody. Western Blot analysis of VSTM2L expression in human liver.