

Datasheet for ABIN530611
anti-DUSP15 antibody (AA 1-235)



[Go to Product page](#)

1 Image

Overview

Quantity:	100 µg
Target:	DUSP15
Binding Specificity:	AA 1-235
Reactivity:	Human
Host:	Rabbit
Clonality:	Polyclonal
Conjugate:	This DUSP15 antibody is un-conjugated
Application:	Western Blotting (WB)

Product Details

Purpose:	Rabbit polyclonal antibody raised against a full-length human DUSP15 protein.
Immunogen:	DUSP15 (AAH56911.1, 1 a.a. ~ 235 a.a) full-length human protein.
Sequence:	MNGMGTKVLP GLYLGNFIDA KLDLQLGRNK ITHIISIHES PQLLQDITY LRIPVADTPE VPIKKHFKEC INFIHCCRLN GGNCLVHCFA GISRSTTIVT AYVMTVTGLG WRDVLEAIKA TRPIANPNPG FRQQLLEFGW ASSQKLRRQL EERFGESPFR DEEELRALLP LCKRCRQGSA TSASSAGPHS AASEGTLQRL VPRTPREAGR PLPLLARVKQ TFSCLPRCLS RKGK
Cross-Reactivity:	Human
Characteristics:	Antibody reactive against mammalian transfected lysate.

Target Details

Target:	DUSP15
---------	--------

Target Details

Alternative Name:	DUSP15 (DUSP15 Products)
Background:	Full Gene Name: dual specificity phosphatase 15 Synonyms: FLJ40111,VHY
Gene ID:	128853

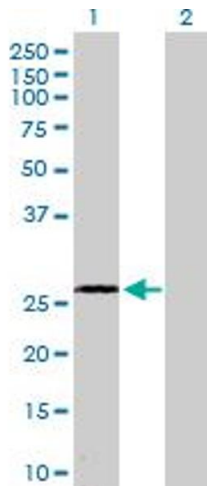
Application Details

Application Notes:	Optimal working dilution should be determined by the investigator.
Restrictions:	For Research Use only

Handling

Buffer:	In 1x PBS, pH 7.4
Handling Advice:	Aliquot to avoid repeated freezing and thawing.
Storage:	-20 °C
Storage Comment:	Store at -20°C or lower. Aliquot to avoid repeated freezing and thawing.

Images



Western Blotting

Image 1. Western Blot analysis of DUSP15 expression in transfected 293T cell line by DUSP15 MaxPab polyclonal antibody.

Lane 1: DUSP15 transfected lysate(26.20 KDa).

Lane 2: Non-transfected lysate.