

Datasheet for ABIN530616  
**anti-ZNF280A antibody (AA 1-542)**



[Go to Product page](#)

3 Images

Overview

Quantity:	50 µg
Target:	ZNF280A
Binding Specificity:	AA 1-542
Reactivity:	Human
Host:	Mouse
Clonality:	Polyclonal
Conjugate:	This ZNF280A antibody is un-conjugated
Application:	Western Blotting (WB), Immunofluorescence (IF)

Product Details

Purpose:	Mouse polyclonal antibody raised against a full-length human SUHW1 protein.
Immunogen:	SUHW1 (AAH53901.1, 1 a.a. ~ 542 a.a) full-length human protein.
Sequence:	<p>MGDIFLCKKV ESPKKNLRES KQREEDDEDP DLIYVGVEHV HRDAEVLFVG MISNSKPVVS          NILNRVTPGS NSRRKKGHFR QYPAHVSQPA NHVTSMAKAI MPVSLSEGRS TDSPVTKSS          SEPGYKMSSP QVSPSSSDS LPPGTQCLVG AMVSGGGRNE SSPDSKRLST SDINSRDSKR          VKLRDGIPGV PSLAVVPSDM SSTISTNTPS QGICNSSNHV QNGVTFPWPD ANGKAHFNLT          DPERASESAL AMTDISSLAS QNKTFDPKKE NPIVLLSDFY YGQHKGDGQP EQKTHHTFKC          LSCVKVLKNI KFMNHMKHHL EFEKQRNSW EDHTTCQHCH RQFPTPFQLQ CHIDSVHIAM          GPSAVCKICE LSFETDQVLL QHMKDHHKPG EMPYVCQVCH YRSSVFADVE THFRTCHENT          KNLLCLFCLK LFKTAIPYMN HCWRHSRRRV LQCSKRLQF LTLKEEIEHK TKDHQTFKKP          EQLQLPSET KVIIQTSVQP GSSGMASVIV SNTDPQSSPV KTKKKTAMNT RDSRLPCSKD SS</p>

## Product Details

Cross-Reactivity:	Human
Characteristics:	Antibody reactive against mammalian transfected lysate.

## Target Details

Target:	ZNF280A
Alternative Name:	ZNF280A ( <a href="#">ZNF280A Products</a> )
Background:	Full Gene Name: zinc finger protein 280A Synonyms: 3'OY11.1,SUHW1,ZNF280,ZNF636
Gene ID:	129025

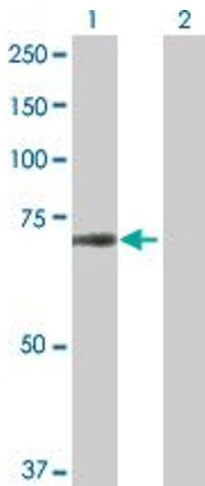
## Application Details

Application Notes:	Optimal working dilution should be determined by the investigator.
Restrictions:	For Research Use only

## Handling

Buffer:	In 1x PBS, pH 7.4
Handling Advice:	Aliquot to avoid repeated freezing and thawing.
Storage:	-20 °C
Storage Comment:	Store at -20°C or lower. Aliquot to avoid repeated freezing and thawing.

## Images

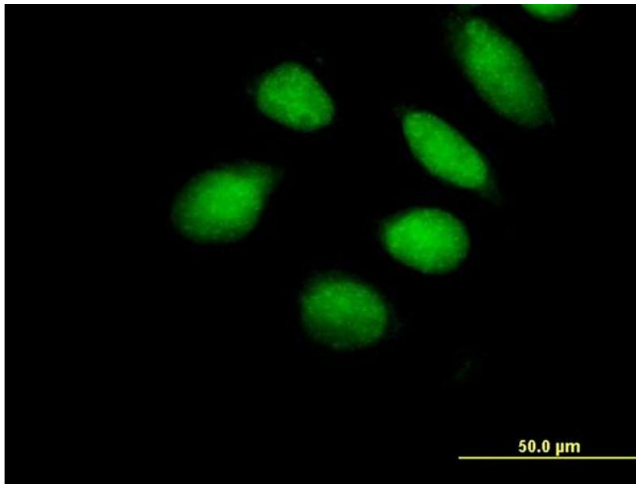


### Western Blotting

**Image 1.** Western Blot analysis of ZNF280A expression in transfected 293T cell line by ZNF280A MaxPab polyclonal antibody.

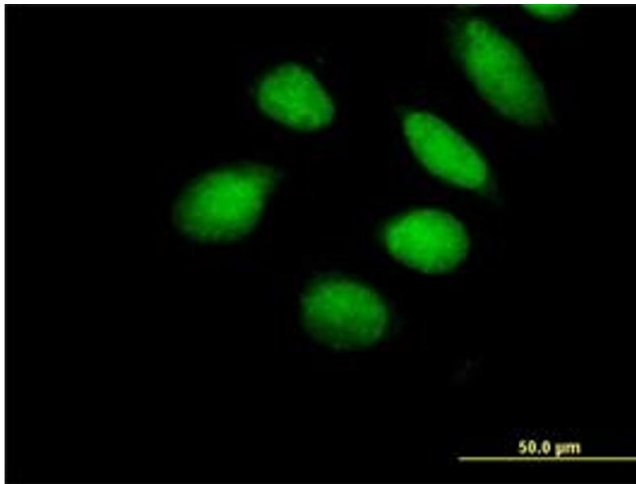
Lane 1: SUHW1 transfected lysate(59.62 KDa).

Lane 2: Non-transfected lysate.



#### Immunofluorescence

**Image 2.** Immunofluorescence of purified MaxPab antibody to SUHW1 on HeLa cell. [antibody concentration 10 μg/ml]



#### Immunofluorescence

**Image 3.** Immunofluorescence of purified MaxPab antibody to SUHW1 on HeLa cell. (antibody concentration 10 μg/mL)