



Datasheet for ABIN530618 **anti-LYG1 antibody (AA 1-194)**



[Go to Product page](#)

1 Image

Overview

Quantity:	50 µg
Target:	LYG1
Binding Specificity:	AA 1-194
Reactivity:	Human
Host:	Mouse
Clonality:	Polyclonal
Conjugate:	This LYG1 antibody is un-conjugated
Application:	Western Blotting (WB)

Product Details

Purpose:	Mouse polyclonal antibody raised against a full-length human LOC129530 protein.
Immunogen:	LOC129530 (NP_777558.1, 1 a.a. ~ 194 a.a) full-length human protein.
Sequence:	MSALWLLLGL LALMDLSESS NWGCGYNIQS LDTPGASCGI GRRHGLNYCG VRASERLAEI DMPYLLKYQP MMQTIGQKYC MDPAVIAGVL SRKSPGDKIL VNMGDRTSMV QDPGSQAPTS WISQSQSQT TEVLTTRIKE IQRRFPTWTP DQYLRGGLCA YSGGAGYVRS SQDLSCDFCN DVLARAKYLK RHGF
Cross-Reactivity:	Human
Characteristics:	Antibody reactive against mammalian transfected lysate.

Target Details

Target:	LYG1
---------	------

Target Details

Alternative Name:	LYG1 (LYG1 Products)
Background:	Full Gene Name: lysozyme G-like 1 Synonyms: SALW1939
Gene ID:	129530
NCBI Accession:	NM_174898

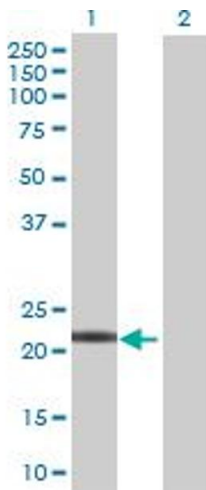
Application Details

Application Notes:	Optimal working dilution should be determined by the investigator.
Restrictions:	For Research Use only

Handling

Buffer:	In 1x PBS, pH 7.4
Handling Advice:	Aliquot to avoid repeated freezing and thawing.
Storage:	-20 °C
Storage Comment:	Store at -20°C or lower. Aliquot to avoid repeated freezing and thawing.

Images



Western Blotting

Image 1. Western Blot analysis of LYG1 expression in transfected 293T cell line by LYG1 MaxPab polyclonal antibody.

Lane 1: LOC129530 transfected lysate(21.34 KDa).

Lane 2: Non-transfected lysate.