



[Go to Product page](#)

Datasheet for ABIN530652

## anti-FBXO36 antibody (AA 1-188)

### 1 Image

#### Overview

Quantity:	100 µg
Target:	FBXO36
Binding Specificity:	AA 1-188
Reactivity:	Human
Host:	Rabbit
Clonality:	Polyclonal
Conjugate:	This FBXO36 antibody is un-conjugated
Application:	Western Blotting (WB)

#### Product Details

Purpose:	Rabbit polyclonal antibody raised against a full-length human FBXO36 protein.
Immunogen:	FBXO36 (AAH33935.1, 1 a.a. ~ 188 a.a) full-length human protein.
Sequence:	MASWLPETLF ETVGQGPPPS KDYYQLLVTR SQVIFRWWKI SLRSEYRSTK PGEAKETHED FLENSHLQGQ TALIFGARIL DYVINFCCKGK FDFLERLSDD LLLTIISYLD LEDIARLCQT SHRFAKLCMS DKLWEQIVQS TCDTITPDVR ALAEDTGWRQ LFFTNNKLQLQ RQLRKRKQKY GNLREKQP
Cross-Reactivity:	Human
Characteristics:	Antibody reactive against mammalian transfected lysate.

#### Target Details

Target:	FBXO36
---------	--------

## Target Details

Alternative Name:	FBX036 ( <a href="#">FBX036 Products</a> )
Background:	Full Gene Name: F-box protein 36 Synonyms: FLJ37592,FLJ41090,Fbx36
Gene ID:	130888

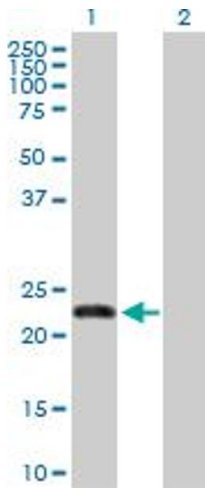
## Application Details

Application Notes:	Optimal working dilution should be determined by the investigator.
Restrictions:	For Research Use only

## Handling

Buffer:	In 1x PBS, pH 7.4
Handling Advice:	Aliquot to avoid repeated freezing and thawing.
Storage:	-20 °C
Storage Comment:	Store at -20°C or lower. Aliquot to avoid repeated freezing and thawing.

## Images



### Western Blotting

**Image 1.** Western Blot analysis of FBX036 expression in transfected 293T cell line by FBX036 MaxPab polyclonal antibody.

Lane 1: FBX036 transfected lysate(22.10 kDa).

Lane 2: Non-transfected lysate.