



[Go to Product page](#)

Datasheet for ABIN530672
anti-TMEM42 antibody (AA 1-159)

1 Image

Overview

Quantity:	50 µL
Target:	TMEM42
Binding Specificity:	AA 1-159
Reactivity:	Human
Host:	Mouse
Clonality:	Polyclonal
Conjugate:	This TMEM42 antibody is un-conjugated
Application:	Western Blotting (WB)

Product Details

Purpose:	Mouse polyclonal antibody raised against a full-length human TMEM42 protein.
Immunogen:	TMEM42 (NP_653239, 1 a.a. ~ 159 a.a) full-length human protein.
Sequence:	MAERPGPPGG AVSATAYPDT PAEFPPHLQA GAMRRRFWGV FNCLCAGAFG ALAAASAKLA FGSEVSMGLC VLGIVMAST NSLMWTFFSR GLSFSMSSAI ASVTVTFSNI LSSAFLGYVL YGECQEVLWW GGVFLILCGL TLIHRKLPPT WKPLPHKQQ
Cross-Reactivity:	Human
Characteristics:	Antibody reactive against mammalian transfected lysate.

Target Details

Target:	TMEM42
---------	--------

Target Details

Alternative Name:	TMEM42 (TMEM42 Products)
Background:	Full Gene Name: transmembrane protein 42 Synonyms: MGC29956
Gene ID:	131616
NCBI Accession:	NM_144638

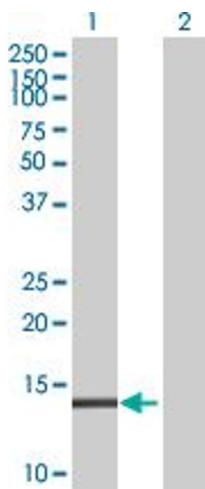
Application Details

Application Notes:	Optimal working dilution should be determined by the investigator.
Restrictions:	For Research Use only

Handling

Format:	Liquid
Buffer:	No additive
Preservative:	Without preservative
Handling Advice:	Aliquot to avoid repeated freezing and thawing.
Storage:	-20 °C
Storage Comment:	Store at -20°C or lower. Aliquot to avoid repeated freezing and thawing.

Images



Western Blotting

Image 1. Western Blot analysis of TMEM42 expression in transfected 293T cell line by TMEM42 MaxPab polyclonal antibody.

Lane 1: TMEM42 transfected lysate(17.49 kDa).

Lane 2: Non-transfected lysate.