

Datasheet for ABIN530677  
**anti-METTL6 antibody (AA 1-255)**



[Go to Product page](#)

1 Image

## Overview

|                      |                                       |
|----------------------|---------------------------------------|
| Quantity:            | 50 µg                                 |
| Target:              | METTL6                                |
| Binding Specificity: | AA 1-255                              |
| Reactivity:          | Human                                 |
| Host:                | Mouse                                 |
| Clonality:           | Polyclonal                            |
| Conjugate:           | This METTL6 antibody is un-conjugated |
| Application:         | Western Blotting (WB)                 |

## Product Details

|                   |  |
|-------------------|--|
| Purpose:          | Mouse polyclonal antibody raised against a full-length human METTL6 protein.   |
| Immunogen:        | METTL6 (AAH22400.1, 1 a.a. ~ 255 a.a) full-length human protein.   |
| Sequence:         | MASLQRKGLQ ARILTSEEEE KLKRDQTLVS DFKQQKLEQE AQKNWDLFYK RNSTNFFKDR<br>HWTTRFEEL RSCREFEDQK LTMLEAGCGV GNCLFPLLEE DPNIFAYACD FSPRAIEYVK<br>QNPLYDTERC KVFQCDLTKD DLLDHVPPES VDVVMLIFVL SAVHPDKMHL VLQNIYKVLK<br>PGKSVLFRDY GLYDHAMLRG KASSKLGENT YVRQDGTRSY FFTDDFLAQL FMDTGYYEEVV<br>NEYVFRETVN KKEGL |
| Cross-Reactivity: | Human  |
| Characteristics:  | Antibody reactive against mammalian transfected lysate.  |

## Target Details

|                   |  |
|-------------------|--|
| Target:           | METTL6   |
| Alternative Name: | METTL6 (METTL6 Products)                                       |
| Background:       | Full Gene Name: methyltransferase like 6<br>Synonyms: MGC24132 |
| Gene ID:          | 131965   |
| NCBI Accession:   | NM_152396  |

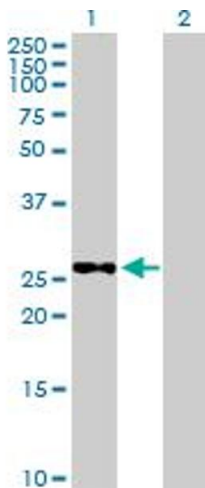
## Application Details

|                    |  |
|--------------------|--|
| Application Notes: | Optimal working dilution should be determined by the investigator. |
| Restrictions:      | For Research Use only  |

## Handling

|                  |  |
|------------------|--|
| Buffer:          | In 1x PBS, pH 7.4  |
| Handling Advice: | Aliquot to avoid repeated freezing and thawing.                          |
| Storage:         | -20 °C   |
| Storage Comment: | Store at -20°C or lower. Aliquot to avoid repeated freezing and thawing. |

## Images



### Western Blotting

**Image 1.** Western Blot analysis of METTL6 expression in transfected 293T cell line by METTL6 MaxPab polyclonal antibody.

Lane 1: METTL6 transfected lysate(28.05 KDa).

Lane 2: Non-transfected lysate.