

Datasheet for ABIN530709
anti-FAM173B antibody (AA 1-233)[Go to Product page](#)

1 Image

Overview

Quantity:	50 µg
Target:	FAM173B
Binding Specificity:	AA 1-233
Reactivity:	Human
Host:	Mouse
Clonality:	Polyclonal
Conjugate:	This FAM173B antibody is un-conjugated
Application:	Western Blotting (WB)

Product Details

Purpose:	Mouse polyclonal antibody raised against a full-length human LOC134145 protein.
Immunogen:	LOC134145 (NP_954584, 1 a.a. ~ 233 a.a) full-length human protein.
Sequence:	MEGGGGIPLE TLKEESQSRH VLPASFEVNS LQKSNWGFLL TGLVGGTLVA VYAVATPFVT PALRKVCLPF VPATMKQIEN VVKMLRCRRG SLVDIGSGDG RIVIAAAKKG FTAVGYELNP WLWYSRYRA WREGVHGS AK FYISDLWKVT FSQYSNVVIF GVPQMMLQLE KKLERELEDD ARVIACRFPF PHWTPDHVTG EGIDTVWAYD ASTFRGREKR PCTSMHFQLP IQA
Cross-Reactivity:	Human
Characteristics:	Antibody reactive against mammalian transfected lysate.

Target Details

Target:	FAM173B
---------	---------

Target Details

Alternative Name:	FAM173B (FAM173B Products)
Background:	Full Gene Name: family with sequence similarity 173, member B Synonyms: FLJ20667
Gene ID:	134145
NCBI Accession:	NM_199133

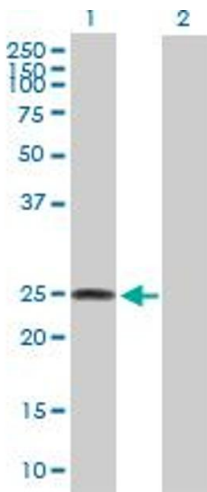
Application Details

Application Notes:	Optimal working dilution should be determined by the investigator.
Restrictions:	For Research Use only

Handling

Buffer:	In 1x PBS, pH 7.4
Handling Advice:	Aliquot to avoid repeated freezing and thawing.
Storage:	-20 °C
Storage Comment:	Store at -20°C or lower. Aliquot to avoid repeated freezing and thawing.

Images



Western Blotting

Image 1. Western Blot analysis of LOC134145 expression in transfected 293T cell line by LOC134145 MaxPab polyclonal antibody.

Lane 1: LOC134145 transfected lysate(25.63 KDa).

Lane 2: Non-transfected lysate.