



[Go to Product page](#)

Datasheet for ABIN530717  
**anti-TMEM171 antibody (AA 1-323)**

1 Image

Overview

Quantity:	50 µg
Target:	TMEM171
Binding Specificity:	AA 1-323
Reactivity:	Human
Host:	Mouse
Clonality:	Polyclonal
Conjugate:	This TMEM171 antibody is un-conjugated
Application:	Western Blotting (WB)

Product Details

Purpose:	Mouse polyclonal antibody raised against a full-length human TMEM171 protein.
Immunogen:	TMEM171 (AAH35310.1, 1 a.a. ~ 323 a.a) full-length human protein.
Sequence:	MSPAAAAEPD GDQQDRHVSK LIFCFFVFGA VLLCVGVLLS IFGFQACQYK PLPDCPMVLK VAGPACAVVG LGAVILARSR AQLQLRAGLQ RGQQMDPDRA FIGGESRQFA QCLIFGFLFL TSGMLISVLG IWVPGCGSNW AQEPLNETDT GDSEPRMCGF LSLQIMGPLI VLVGLCFFVW AHVKKRNTLN AGQDASEREE GQIQIMEPVQ VTVGDSVIIF PPPPPYFPE SSASAVAESP GTNSLLPNEN PPSYYSIFNY GTPTSEGAAS ERDCESIYTI SGTNSSEAS HTPHLPSELP PRYEKENAA ATFLPLSSEP SSP
Cross-Reactivity:	Human
Characteristics:	Antibody reactive against mammalian transfected lysate.

## Target Details

Target:	TMEM171
Alternative Name:	TMEM171 ( <a href="#">TMEM171 Products</a> )
Background:	Full Gene Name: transmembrane protein 171 Synonyms: PRP2
Gene ID:	134285

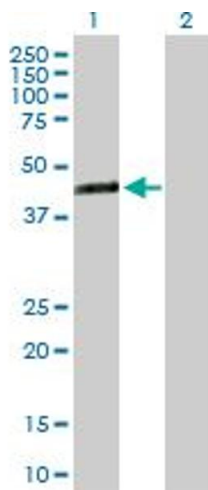
## Application Details

Application Notes:	Optimal working dilution should be determined by the investigator.
Restrictions:	For Research Use only

## Handling

Buffer:	In 1x PBS, pH 7.4
Handling Advice:	Aliquot to avoid repeated freezing and thawing.
Storage:	-20 °C
Storage Comment:	Store at -20°C or lower. Aliquot to avoid repeated freezing and thawing.

## Images



### Western Blotting

**Image 1.** Western Blot analysis of TMEM171 expression in transfected 293T cell line by TMEM171 MaxPab polyclonal antibody.

Lane 1: PRP2 transfected lysate(35.53 kDa).

Lane 2: Non-transfected lysate.