



[Go to Product page](#)

Datasheet for ABIN530721  
**anti-WDR36 antibody (AA 853-951)**

1 Image

Overview

Quantity:	50 µL
Target:	WDR36
Binding Specificity:	AA 853-951
Reactivity:	Human
Host:	Mouse
Clonality:	Polyclonal
Conjugate:	This WDR36 antibody is un-conjugated
Application:	ELISA, Western Blotting (WB)

Product Details

Purpose:	Mouse polyclonal antibody raised against a partial recombinant WDR36.
Immunogen:	WDR36 (NP_644810, 853 a.a. ~ 951 a.a) partial recombinant protein with GST tag.
Sequence:	SGIETELRSL SPDCGGSIEV MQSFLKMIGM MLDRKRDFEL AQAYLALFLK LHLKMLPSEP VLLLEEITNLS SQVEENWTHL QSLFNQSMCI LNYLKSALL
Cross-Reactivity:	Human
Characteristics:	Antibody Reactive Against Recombinant Protein.

Target Details

Target:	WDR36
Alternative Name:	WDR36 ( <a href="#">WDR36 Products</a> )

## Target Details

Background:	Full Gene Name: WD repeat domain 36 Synonyms: DKFZp686I1650,GLC1G,TA-WDRP,TAWDRP,UTP21
Gene ID:	134430
NCBI Accession:	<a href="#">NM_139281</a>
Pathways:	<a href="#">Regulation of Cell Size</a>

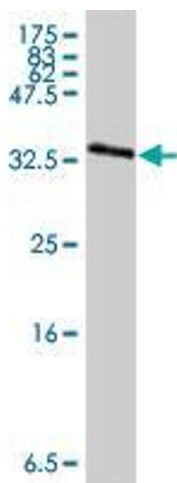
## Application Details

Application Notes:	Optimal working dilution should be determined by the investigator.
Restrictions:	For Research Use only

## Handling

Format:	Liquid
Buffer:	50 % glycerol
Handling Advice:	Aliquot to avoid repeated freezing and thawing.
Storage:	-20 °C
Storage Comment:	Store at -20°C or lower. Aliquot to avoid repeated freezing and thawing.

## Images



### Western Blotting

**Image 1.** Western Blot detection against Immunogen (37 kDa).