



[Go to Product page](#)

Datasheet for ABIN530722

## anti-WDR36 antibody (AA 853-951)

2 Images

3 Publications

### Overview

Quantity:	100 µg
Target:	WDR36
Binding Specificity:	AA 853-951
Reactivity:	Human
Host:	Mouse
Clonality:	Monoclonal
Conjugate:	This WDR36 antibody is un-conjugated
Application:	ELISA, Western Blotting (WB)

### Product Details

Purpose:	Mouse monoclonal antibody raised against a partial recombinant WDR36.
Immunogen:	WDR36 (NP_644810, 853 a.a. ~ 951 a.a) partial recombinant protein with GST tag. MW of the GST tag alone is 26 KDa.
Sequence:	SGIETELRSL SPDCGGSIEV MQSFLKMIGM MLDRKRDFEL AQAYLALFLK LHLKMLPSEP VLLLEITNLS SQVEENWTHL QSLFNQSMCI LNYLKSALL
Clone:	1D6
Isotype:	IgG2a
Cross-Reactivity:	Human
Characteristics:	Antibody Reactive Against Recombinant Protein.

## Target Details

---

Target:	WDR36
Alternative Name:	WDR36 ( <a href="#">WDR36 Products</a> )
Background:	Full Gene Name: WD repeat domain 36 Synonyms: DKFZp686l1650, GLC1G, TA-WDRP, TAWDRP, UTP21
Gene ID:	134430
NCBI Accession:	<a href="#">NM_139281</a>
Pathways:	<a href="#">Regulation of Cell Size</a>

## Application Details

---

Application Notes:	Optimal working dilution should be determined by the investigator.
Restrictions:	For Research Use only

## Handling

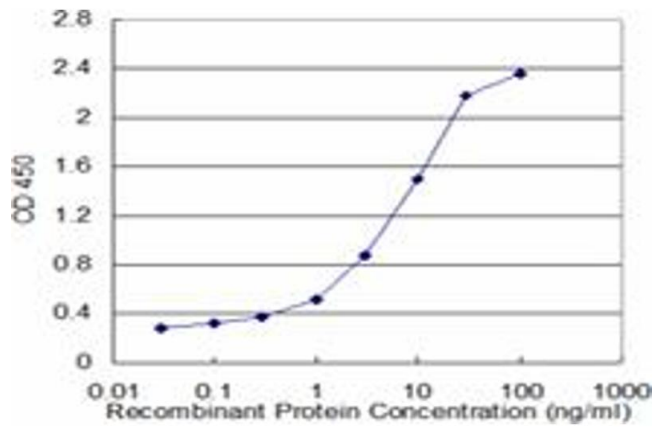
---

Buffer:	In 1x PBS, pH 7.4
Handling Advice:	Aliquot to avoid repeated freezing and thawing.
Storage:	-20 °C
Storage Comment:	Store at -20°C or lower. Aliquot to avoid repeated freezing and thawing.

## Publications

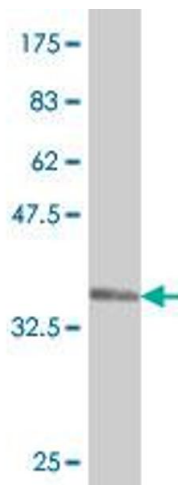
---

Product cited in:	<p>Cartier, Parent, Labrecque, Laroche, Parent: "WDR36 acts as a scaffold protein tethering a G-protein-coupled receptor, G<math>\alpha</math>q and phospholipase C<math>\beta</math> in a signalling complex." in: <b>Journal of cell science</b>, Vol. 124, Issue Pt 19, pp. 3292-304, (2011) (<a href="#">PubMed</a>).</p> <p>Lin, Chen, Chen, Liou, Chen, Yang, Shiue: "Identification of early transcripts related to male development in chicken embryos." in: <b>Theriogenology</b>, Vol. 74, Issue 7, pp. 1161-1178.e1-8, (2010) (<a href="#">PubMed</a>).</p> <p>Footz, Johnson, Dubois, Boivin, Raymond, Walter: "Glaucoma-associated WDR36 variants encode functional defects in a yeast model system." in: <b>Human molecular genetics</b>, Vol. 18, Issue 7, pp. 1276-87, (2009) (<a href="#">PubMed</a>).</p>
-------------------	-----------------------------------------------------------------------------------------------------------------------------------------------------------------------------------------------------------------------------------------------------------------------------------------------------------------------------------------------------------------------------------------------------------------------------------------------------------------------------------------------------------------------------------------------------------------------------------------------------------------------------------------------------------------------------------------------------------------------------------------------------------------------------------------------------------------------------



### ELISA

**Image 1.** Detection limit for recombinant GST tagged WDR36 is approximately 0.3ng/ml as a capture antibody.



### Western Blotting

**Image 2.** Western Blot detection against Immunogen (36.63 KDa) .