



Datasheet for ABIN530744
anti-ADHFE1 antibody (AA 1-419)



[Go to Product page](#)

1 Image

Overview

Quantity:	50 µg
Target:	ADHFE1
Binding Specificity:	AA 1-419
Reactivity:	Human
Host:	Mouse
Clonality:	Polyclonal
Conjugate:	This ADHFE1 antibody is un-conjugated
Application:	Western Blotting (WB)

Product Details

Purpose:	Mouse polyclonal antibody raised against a full-length human ADHFE1 protein.
Immunogen:	ADHFE1 (NP_653251.1, 1 a.a. ~ 419 a.a) full-length human protein.
Sequence:	MAVSNIRYGA AVTKEVGM DL KNMGAKNVCL MTDKNLSKLP PVQVAMDSL V KNGIPFTVYD NVRVEPTDSS FMEAIEFAQK GAFDAYVAVG GGSTMDTCKA ANLYASSPHS DFLDYVSAPI GKGKPVSVPL KPLIAVPTTS GTGSETTGVA IFDYEHLKVK IGITSRAIKP TLGLIDPLHT LHMPARVVAN SGFDVLCHAL ESYTTLPYHL RSPCPSNPIT RPAYQGSNPI SDIWAIHALR IVAKYLKRAV RNPDDLEARS HMHLASAFAG IGFGNAGVHL CHGMSYPISG LVKMYKAKDY NVDHPLVPHG LSVLTSPAV FTFTAQMFPE RHLEMAEILG ADTRTARIQD AGLVLADTLR KFLFDLDVDD GLAAVGYSKA DIPALVKGTL PQERVTKLAP RPQSEEDLAA LFEASMKLY
Cross-Reactivity:	Human
Characteristics:	Antibody reactive against mammalian transfected lysate.

Target Details

Target:	ADHFE1
Alternative Name:	ADHFE1 (ADHFE1 Products)
Background:	Full Gene Name: alcohol dehydrogenase, iron containing, 1 Synonyms: ADH8,FLJ32430,HMFT2263,HOT,MGC48605
Gene ID:	137872
NCBI Accession:	NM_144650

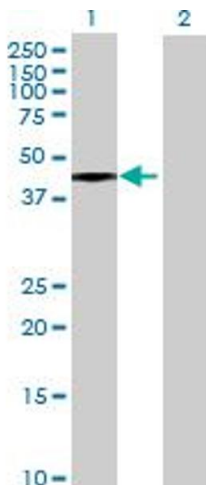
Application Details

Application Notes:	Optimal working dilution should be determined by the investigator.
Restrictions:	For Research Use only

Handling

Buffer:	In 1x PBS, pH 7.4
Handling Advice:	Aliquot to avoid repeated freezing and thawing.
Storage:	-20 °C
Storage Comment:	Store at -20°C or lower. Aliquot to avoid repeated freezing and thawing.

Images



Western Blotting

Image 1. Western Blot analysis of ADHFE1 expression in transfected 293T cell line by ADHFE1 MaxPab polyclonal antibody.

Lane 1: ADHFE1 transfected lysate(46.09 KDa).

Lane 2: Non-transfected lysate.