

Datasheet for ABIN530755  
**anti-PASD1 antibody (AA 1-100)**



[Go to Product page](#)

**3** Images

## Overview

Quantity:	100 µg
Target:	PASD1
Binding Specificity:	AA 1-100
Reactivity:	Human
Host:	Mouse
Clonality:	Monoclonal
Conjugate:	This PASD1 antibody is un-conjugated
Application:	ELISA, Western Blotting (WB)

## Product Details

Purpose:	Mouse monoclonal antibody raised against a partial recombinant PASD1.
Immunogen:	PASD1 (NP_775764, 1 a.a. ~ 100 a.a) partial recombinant protein with GST tag. MW of the GST tag alone is 26 KDa.
Sequence:	MKMRGEKRRD KVNPKSSQRK LNWIPSFPTY DYFNQVTLQL LDGFMITLST DGVIICVAEN ISSLLGHLPA EIVGKKLLSL LPDEEKDEVY QKIILKFPLL
Clone:	2B10
Isotype:	IgG2a
Cross-Reactivity:	Human
Characteristics:	Antibody Reactive Against Recombinant Protein.

## Target Details

Target:	PASD1
Alternative Name:	PASD1 ( <a href="#">PASD1 Products</a> )
Background:	Full Gene Name: PAS domain containing 1 Synonyms:
Gene ID:	139135
NCBI Accession:	<a href="#">NM_173493</a>

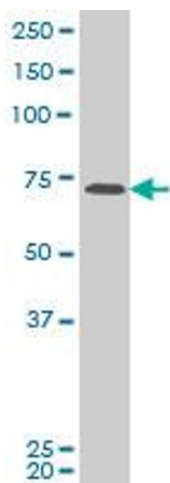
## Application Details

Application Notes:	Optimal working dilution should be determined by the investigator.
Restrictions:	For Research Use only

## Handling

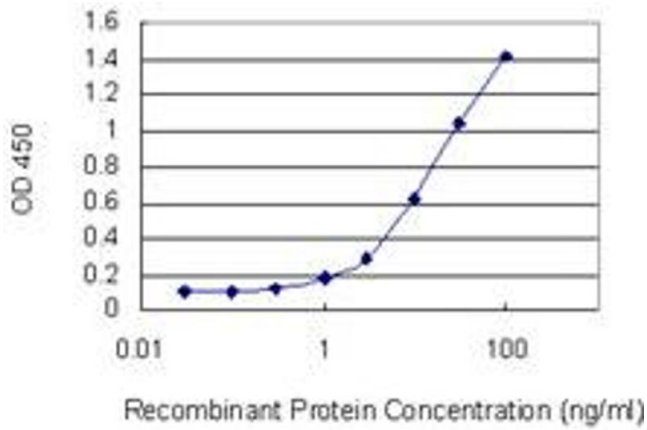
Buffer:	In 1x PBS, pH 7.4
Handling Advice:	Aliquot to avoid repeated freezing and thawing.
Storage:	-20 °C
Storage Comment:	Store at -20°C or lower. Aliquot to avoid repeated freezing and thawing.

## Images



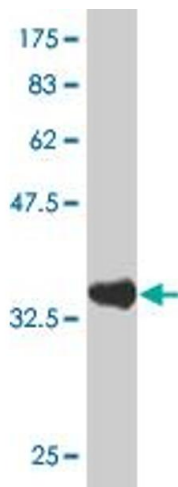
### Western Blotting

**Image 1.** PASD1 monoclonal antibody (M04), clone 2B10  
Western Blot analysis of PASD1 expression in HeLa S3 NE .



### ELISA

**Image 2.** Detection limit for recombinant GST tagged PASD1 is 0.3 ng/ml as a capture antibody.



### Western Blotting

**Image 3.** Western Blot detection against Immunogen (37 kDa).