

Datasheet for ABIN530756
anti-PASD1 antibody (AA 1-100)



[Go to Product page](#)

2 Images

Overview

| | |
|----------------------|--------------------------------------|
| Quantity: | 100 µg |
| Target: | PASD1 |
| Binding Specificity: | AA 1-100 |
| Reactivity: | Human |
| Host: | Mouse |
| Clonality: | Monoclonal |
| Conjugate: | This PASD1 antibody is un-conjugated |
| Application: | ELISA, Western Blotting (WB) |

Product Details

| | |
|-------------------|--|
| Purpose: | Mouse monoclonal antibody raised against a full length recombinant PASD1. |
| Immunogen: | PASD1 (NP_775764, 1 a.a. ~ 100 a.a) full length recombinant protein with GST tag. MW of the GST tag alone is 26 KDa. |
| Sequence: | MKMRGEKRRD KVNPKSSQRK LNWIPSFPTY DYFNQVTLQL LDGFMITLST DGVIICVAEN ISSLLGHLPA EIVGKKLLSL LPDEEKDEVY QKIILKFPLL |
| Clone: | 1G12 |
| Isotype: | IgG2b |
| Cross-Reactivity: | Human |
| Characteristics: | Antibody Reactive Against Recombinant Protein. |

Target Details

| | |
|-------------------|--|
| Target: | PASD1 |
| Alternative Name: | PASD1 (PASD1 Products) |
| Background: | Full Gene Name: PAS domain containing 1 Synonyms: |
| Gene ID: | 139135 |
| NCBI Accession: | NM_173493 |

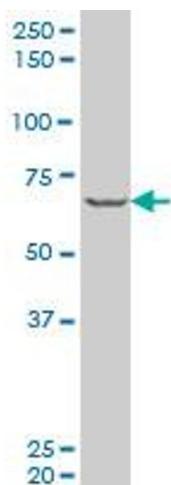
Application Details

| | |
|--------------------|--|
| Application Notes: | Optimal working dilution should be determined by the investigator. |
| Restrictions: | For Research Use only |

Handling

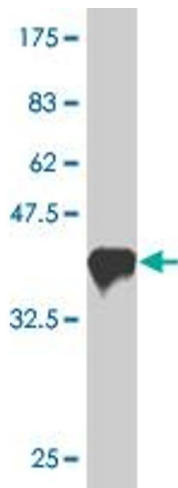
| | |
|------------------|--|
| Buffer: | In 1x PBS, pH 7.4 |
| Handling Advice: | Aliquot to avoid repeated freezing and thawing. |
| Storage: | -20 °C |
| Storage Comment: | Store at -20°C or lower. Aliquot to avoid repeated freezing and thawing. |

Images



Western Blotting

Image 1. PASD1 monoclonal antibody (M06), clone 1G12
Western Blot analysis of PASD1 expression in HeLa .



Western Blotting

Image 2. Western Blot detection against Immunogen (37 kDa).