



[Go to Product page](#)

Datasheet for ABIN530758
anti-PASD1 antibody (AA 1-100)

3 Images

Overview

Quantity:	100 µg
Target:	PASD1
Binding Specificity:	AA 1-100
Reactivity:	Human
Host:	Mouse
Clonality:	Monoclonal
Conjugate:	This PASD1 antibody is un-conjugated
Application:	ELISA, Western Blotting (WB), Immunofluorescence (IF)

Product Details

Purpose:	Mouse monoclonal antibody raised against a full length recombinant PASD1.
Immunogen:	PASD1 (NP_775764, 1 a.a. ~ 100 a.a) full length recombinant protein with GST tag. MW of the GST tag alone is 26 KDa.
Sequence:	MKMRGEKRRD KVNPKSSQRK LNWIPSFPTY DYFNQVTLQL LDGFMITLST DGVIICVAEN ISSLLGHLPA EIVGKKLLSL LPDEEKDEVY QKIILKFPLL
Clone:	3C1
Isotype:	IgG2a
Cross-Reactivity:	Human
Characteristics:	Antibody Reactive Against Recombinant Protein.

Target Details

Target:	PASD1
Alternative Name:	PASD1 (PASD1 Products)
Background:	Full Gene Name: PAS domain containing 1 Synonyms:
Gene ID:	139135
NCBI Accession:	NM_173493

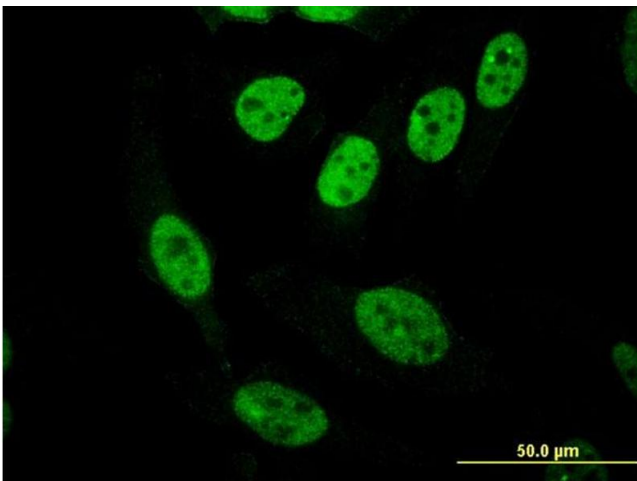
Application Details

Application Notes:	Optimal working dilution should be determined by the investigator.
Restrictions:	For Research Use only

Handling

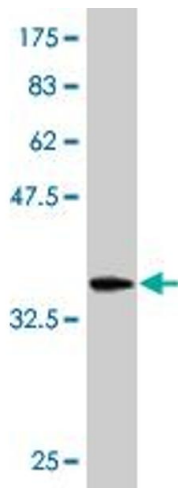
Buffer:	In 1x PBS, pH 7.4
Handling Advice:	Aliquot to avoid repeated freezing and thawing.
Storage:	-20 °C
Storage Comment:	Store at -20°C or lower. Aliquot to avoid repeated freezing and thawing.

Images



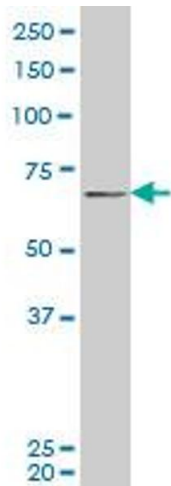
Immunofluorescence

Image 1. Immunofluorescence of monoclonal antibody to PASD1 on HeLa cell. [antibody concentration 10 ug/ml]



Western Blotting

Image 2. Western Blot detection against Immunogen (37 kDa).



Western Blotting

Image 3. PASD1 monoclonal antibody (M08), clone 3C1 Western Blot analysis of PASD1 expression in Hela S3 NE.