

Datasheet for ABIN530775  
**anti-ASB6 antibody (AA 1-421)**[Go to Product page](#)

## 2 Images

## Overview

Quantity:	50 µg
Target:	ASB6
Binding Specificity:	AA 1-421
Reactivity:	Human
Host:	Mouse
Clonality:	Polyclonal
Conjugate:	This ASB6 antibody is un-conjugated
Application:	Western Blotting (WB)

## Product Details

Purpose:	Mouse polyclonal antibody raised against a full-length human ASB6 protein.
Immunogen:	ASB6 (NP_060343.1, 1 a.a. ~ 421 a.a) full-length human protein.
Sequence:	MPFLHGFRR IFEYQPLVDA ILGSLGIQDP ERQESLDRPS YVASEESRIL VLTELLERKA HSPFYQEGVS NALLKMAELG LTRAADVLLR HGANLNFEDP VTYYTALHIA VLRNQPD MVE LLVHHGADV NRRDRIHESSP LDLASEEPER LPCLQRLLDL GADVNAADKH GKTALLHALA SSDGVQIHNT ENIRLLLEGG ADVKATTKDG DTVFTCIIFL LGETVGGDKE EAQMINRFCF QVTRLLLAHG ADPSECPAHE SLTHICLKSF KLHFPLLRFL LESGAAYNCS LHGASCWSGF HIIFERLCSH PGCTEDESHA DLLRKAETVL DLMVTNSQKL QLPENFDIHP VGSLAEKIQA LHFSLRQLES YPPPLKHLCR VAIRLYLQPW PVDVKVKALP LPDRLKWYLL SEHSGSVEDD I
Cross-Reactivity:	Human
Characteristics:	Antibody reactive against mammalian transfected lysate.

## Target Details

Target:	ASB6
Alternative Name:	ASB6 ( <a href="#">ASB6 Products</a> )
Background:	Full Gene Name: ankyrin repeat and SOCS box-containing 6 Synonyms: FLJ20548,MGC1024
Gene ID:	140459
NCBI Accession:	<a href="#">NM_017873</a>

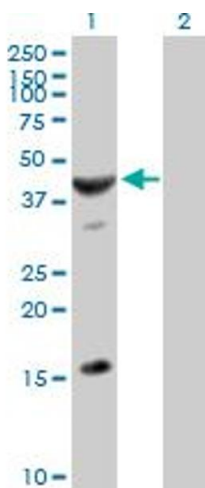
## Application Details

Application Notes:	Optimal working dilution should be determined by the investigator.
Restrictions:	For Research Use only

## Handling

Buffer:	In 1x PBS, pH 7.4
Handling Advice:	Aliquot to avoid repeated freezing and thawing.
Storage:	-20 °C
Storage Comment:	Store at -20°C or lower. Aliquot to avoid repeated freezing and thawing.

## Images

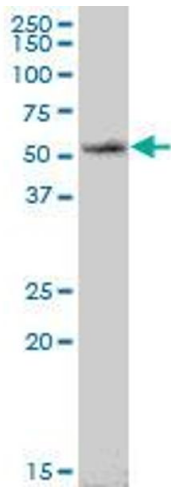


### Western Blotting

**Image 1.** Western Blot analysis of ASB6 expression in transfected 293T cell line by ASB6 MaxPab polyclonal antibody.

Lane 1: ASB6 transfected lysate(46.31 KDa).

Lane 2: Non-transfected lysate.



### Western Blotting

**Image 2.** ASB6 MaxPab polyclonal antibody. Western Blot analysis of ASB6 expression in human liver.