

Datasheet for ABIN530784
anti-MYL6B antibody (AA 1-208)

1 Image

[Go to Product page](#)

Overview

Quantity:	50 µg
Target:	MYL6B
Binding Specificity:	AA 1-208
Reactivity:	Human
Host:	Mouse
Clonality:	Polyclonal
Conjugate:	This MYL6B antibody is un-conjugated
Application:	Western Blotting (WB)

Product Details

Purpose:	Mouse polyclonal antibody raised against a full-length human MYL6B protein.
Immunogen:	MYL6B (NP_002466.1, 1 a.a. ~ 208 a.a) full-length human protein.
Sequence:	MPPKKDVPVK KPAGPSISKP AAKPAAAGAP PAKTKAEPV PQAPQKTQEP PVDLSKVVIE FNKDQLEEFK EAFELFDRVG DGKILYSQCG DVMRALGQNP TNAEVLKVLG NPKSDELKSR RVDFETFLPM LQAVAKNRGQ GTYEDYLEGF RVFDKEGNGK VMGAELRHVL TTLGEKMTEE EVETVLAGE DSNGCINYE FLKHILSV
Cross-Reactivity:	Human
Characteristics:	Antibody reactive against mammalian transfected lysate.

Target Details

Target:	MYL6B
---------	-------

Target Details

Alternative Name:	MYL6B (MYL6B Products)
Background:	Full Gene Name: myosin, light chain 6B, alkali, smooth muscle and non-muscle Synonyms: MLC1SA
Gene ID:	140465
NCBI Accession:	NM_002475

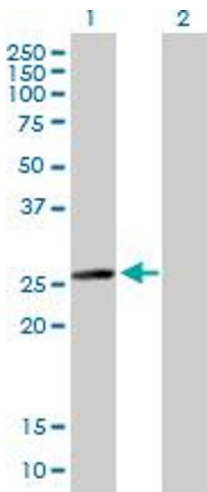
Application Details

Application Notes:	Optimal working dilution should be determined by the investigator.
Restrictions:	For Research Use only

Handling

Buffer:	In 1x PBS, pH 7.4
Handling Advice:	Aliquot to avoid repeated freezing and thawing.
Storage:	-20 °C
Storage Comment:	Store at -20°C or lower. Aliquot to avoid repeated freezing and thawing.

Images



Western Blotting

Image 1. Western Blot analysis of MYL6B expression in transfected 293T cell line by MYL6B MaxPab polyclonal antibody.

Lane 1: MLC1SA transfected lysate(22.88 KDa).

Lane 2: Non-transfected lysate.