

Datasheet for ABIN530786
anti-MYL6B antibody (AA 109-208)

3 Images

[Go to Product page](#)

Overview

Quantity:	100 µg
Target:	MYL6B
Binding Specificity:	AA 109-208
Reactivity:	Human
Host:	Mouse
Clonality:	Monoclonal
Conjugate:	This MYL6B antibody is un-conjugated
Application:	Western Blotting (WB), ELISA

Product Details

Purpose:	Mouse monoclonal antibody raised against a partial recombinant MLC1SA.
Immunogen:	MLC1SA (NP_002466, 109 a.a. ~ 208 a.a) partial recombinant protein with GST tag. MW of the GST tag alone is 26 KDa.
Sequence:	LGNPKSDELK SRRVDFETFL PMLQAVAKNR GQGTYEDYLE GFRVFDKEGN GKVMGAELRH VLTTLGKMT EEEVETVLG HEDSNGCINY EAFLKHILSV
Clone:	4G11
Isotype:	IgG2b
Cross-Reactivity:	Human
Characteristics:	Antibody Reactive Against Recombinant Protein.

Target Details

Target:	MYL6B
Alternative Name:	MYL6B (MYL6B Products)
Background:	Full Gene Name: myosin, light chain 6B, alkali, smooth muscle and non-muscle Synonyms: MLC1SA
Gene ID:	140465
NCBI Accession:	NM_002475

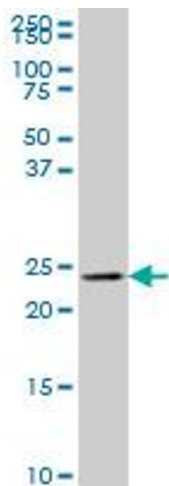
Application Details

Application Notes:	Optimal working dilution should be determined by the investigator.
Restrictions:	For Research Use only

Handling

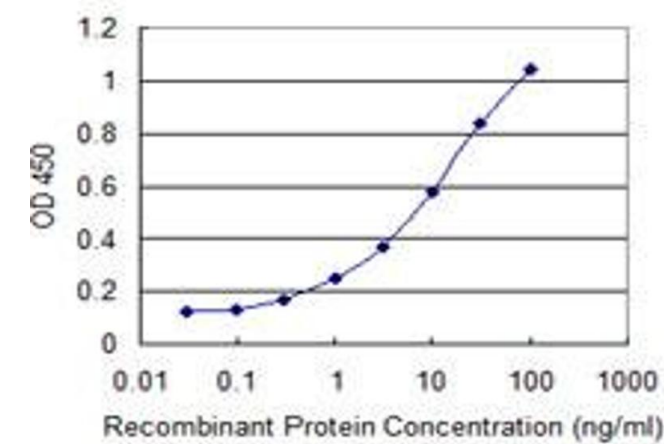
Buffer:	In 1x PBS, pH 7.4
Handling Advice:	Aliquot to avoid repeated freezing and thawing.
Storage:	-20 °C
Storage Comment:	Store at -20°C or lower. Aliquot to avoid repeated freezing and thawing.

Images



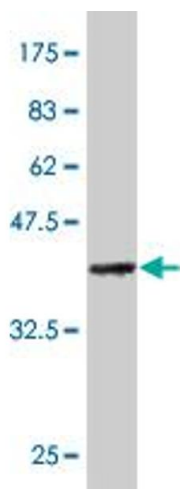
Western Blotting

Image 1. MLC1SA monoclonal antibody (M01), clone 4G11
Western Blot analysis of MLC1SA expression in K-562 .



ELISA

Image 2. Detection limit for recombinant GST tagged MYL6B is 0.1 ng/ml as a capture antibody.



Western Blotting

Image 3. Western Blot detection against Immunogen (36.74 kDa) .