



[Go to Product page](#)

Datasheet for ABIN530861
anti-GLT1D1 antibody (AA 1-266)

2 Images

Overview

Quantity:	50 µg
Target:	GLT1D1
Binding Specificity:	AA 1-266
Reactivity:	Human
Host:	Mouse
Clonality:	Polyclonal
Conjugate:	This GLT1D1 antibody is un-conjugated
Application:	Western Blotting (WB)

Product Details

Purpose:	Mouse polyclonal antibody raised against a full-length human GLT1D1 protein.
Immunogen:	GLT1D1 (NP_653270.1, 1 a.a. ~ 266 a.a) full-length human protein.
Sequence:	MRLFLAVLR PHTGNAVTAQ RVRAHLEAAG HVCVLKDAFD FESRSEIANL ILAENCEAAL ALHLYRGGRL LQGHRIPIGV IFGGTDVNED ANQAEKNTVM GRVLEEARFA VAFTESMKEM AQAQWVDPVF TREVKAKVKR AAGVRLIGEM PQEDLHAVVK NCFAVVNSSV SEGMSAAILE AMDLEVPVLA RNIPGNAAVV KHEVTGLLFS NPQEFVHLAK RLVSDPALEK EIVVNGREYV RMYHSWQVER DTYQQLIRKL EGSTED
Cross-Reactivity:	Human
Characteristics:	Antibody reactive against mammalian transfected lysate.

Target Details

Target:	GLT1D1
Alternative Name:	GLT1D1 (GLT1D1 Products)
Background:	Full Gene Name: glycosyltransferase 1 domain containing 1 Synonyms: FLJ31978
Gene ID:	144423
NCBI Accession:	NM_144669

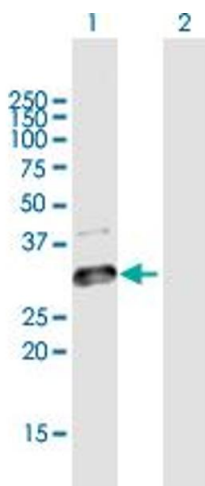
Application Details

Application Notes:	Optimal working dilution should be determined by the investigator.
Restrictions:	For Research Use only

Handling

Buffer:	In 1x PBS, pH 7.4
Handling Advice:	Aliquot to avoid repeated freezing and thawing.
Storage:	-20 °C
Storage Comment:	Store at -20°C or lower. Aliquot to avoid repeated freezing and thawing.

Images

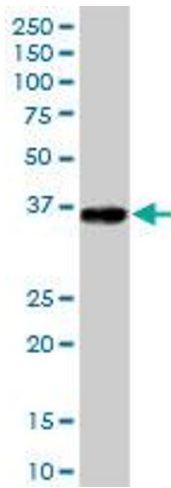


Western Blotting

Image 1. Western Blot analysis of GLT1D1 expression in transfected 293T cell line by GLT1D1 MaxPab polyclonal antibody.

Lane 1: GLT1D1 transfected lysate(29.26 KDa).

Lane 2: Non-transfected lysate.



Western Blotting

Image 2. GLT1D1 MaxPab polyclonal antibody. Western Blot analysis of GLT1D1 expression in human placenta.