



[Go to Product page](#)

Datasheet for ABIN530862
anti-A2ML1 antibody (AA 1-158)

1 Image

Overview

Quantity:	50 µL
Target:	A2ML1
Binding Specificity:	AA 1-158
Reactivity:	Human
Host:	Mouse
Clonality:	Polyclonal
Conjugate:	This A2ML1 antibody is un-conjugated
Application:	Western Blotting (WB)

Product Details

Purpose:	Mouse polyclonal antibody raised against a full-length human A2ML1 protein.
Immunogen:	A2ML1 (AAH93840.1, 1 a.a. ~ 158 a.a) full-length human protein.
Sequence:	MYTLEASGQG CVYVQTVLRY NILPPTNMKT FLSLSVEIGKA RCEQPTSPRS LTLTIHTSYV GSRSSSNMAI VEVKMLSGFS PMEGTNQLLL QQPLVKKVEF GTDTLNIYLD ELIKNTQTYT FTISQSVLVT NLKPATIKVY DYYLPDEQAT IQYSDPCE
Cross-Reactivity:	Human
Characteristics:	Antibody reactive against mammalian transfected lysate.

Target Details

Target:	A2ML1
---------	-------

Target Details

Alternative A2ML1 ([A2ML1 Products](#))

Name:

Background: Full Gene Name: alpha-2-macroglobulin-like 1

Synonyms:

CPAMD9,DKFZp686C1729,DKFZp686D2011,DKFZp686G1812,DKFZp686L1821,DKFZp686O1010,FLJ16045,FLJ25179,FLJ25180

Gene ID: 144568

Application Details

Application Notes: Optimal working dilution should be determined by the investigator.

Restrictions: For Research Use only

Handling

Format: Liquid

Buffer: No additive

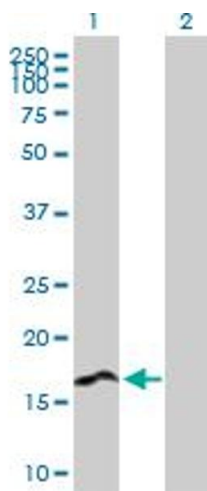
Preservative: Without preservative

Handling Advice: Aliquot to avoid repeated freezing and thawing.

Storage: -20 °C

Storage Comment: Store at -20°C or lower. Aliquot to avoid repeated freezing and thawing.

Images



Western Blotting

Image 1. Western Blot analysis of A2ML1 expression in transfected 293T cell line by A2ML1 MaxPab polyclonal antibody.

Lane1:A2ML1 transfected lysate(17.38 kDa).

Lane2:Non-transfected lysate.