



[Go to Product page](#)

Datasheet for ABIN530865
anti-LACC1 antibody (AA 1-430)

1 Image

Overview

Quantity:	50 µg
Target:	LACC1 (C13orf31)
Binding Specificity:	AA 1-430
Reactivity:	Human
Host:	Mouse
Clonality:	Polyclonal
Conjugate:	This LACC1 antibody is un-conjugated
Application:	Western Blotting (WB)

Product Details

Purpose:	Mouse polyclonal antibody raised against a full-length human FLJ38725 protein.
Immunogen:	FLJ38725 (AAH35749.1, 1 a.a. ~ 430 a.a) full-length human protein.
Sequence:	MAEAVLIDLF GLKLNSQKNC HQTLLKTLNA VQYHHAAKAK FLCIMCCSNI SYERDGEQDN CEIETSNGLS ALLEEF EIVS CPSMAATLYT IKQKIDEKNL SSIKIVVPRH RKTLMKAFID QLFTDVYNFE FEDLQVTFRG GLFKQSIEIN VITAQELRGI QNEIETFLRS LPALRGKLT I TSSLPIDIF IHGFTTRTGG ISYIPTLSSF NLFSSSKRRD PKVVVQENLR RLANAAGFNV EKFYRIKTHH SNDIWIMGRK EPDSYDGITT NQRGV TIAAL GADCIPIVFA DPVKKACGVA HAGWKGTLLG VAMATVNAMI AEYGCSLEDI VVVLGPSVGP CCFTLPRESA EAFHNLHPAC VQLFDSPNPC IDIRKATRIL LEQGGILPQN IQDQNQDLNL CTSCHPDKFF SHVRDGLNFG TQIGFISIKE
Cross-Reactivity:	Human
Characteristics:	Antibody reactive against mammalian transfected lysate.

Target Details

Target:	LACC1 (C13orf31)
Alternative Name:	C13orf31 (C13orf31 Products)
Background:	Full Gene Name: chromosome 13 open reading frame 31 Synonyms: DKFZp686D11119,FLJ38725
Gene ID:	144811

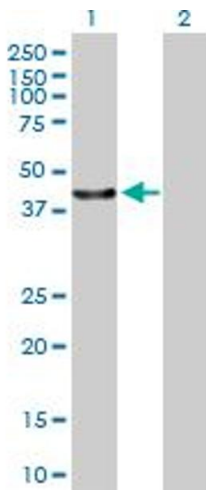
Application Details

Application Notes:	Optimal working dilution should be determined by the investigator.
Restrictions:	For Research Use only

Handling

Buffer:	In 1x PBS, pH 7.4
Handling Advice:	Aliquot to avoid repeated freezing and thawing.
Storage:	-20 °C
Storage Comment:	Store at -20°C or lower. Aliquot to avoid repeated freezing and thawing.

Images



Western Blotting

Image 1. Western Blot analysis of C13orf31 expression in transfected 293T cell line by C13orf31 MaxPab polyclonal antibody.

Lane 1: FLJ38725 transfected lysate(47.3 KDa).

Lane 2: Non-transfected lysate.