



[Go to Product page](#)

Datasheet for ABIN530914
anti-TMED6 antibody (AA 1-240)

1 Image

Overview

Quantity:	50 µg
Target:	TMED6
Binding Specificity:	AA 1-240
Reactivity:	Human
Host:	Mouse
Clonality:	Polyclonal
Conjugate:	This TMED6 antibody is un-conjugated
Application:	Western Blotting (WB)

Product Details

Purpose:	Mouse polyclonal antibody raised against a full-length human TMED6 protein.
Immunogen:	TMED6 (NP_653277.1, 1 a.a. ~ 240 a.a) full-length human protein.
Sequence:	MSPLLFGAGL VVLNLVTSAR SQKTEPLSGS GDQPLFRGAD RYDFAIMIPP GGTECFWQFA HQTGYFYFSC EVQRTVGMSH DRHVAATAHN PQGFLIDTSQ GVRGQINFST QETGFYQLCL SNQHNHFGSV QVYLNFGVFY EGPETDHKQK ERKQLNDTLD AIEDGTQKVQ NNIFHMWRYY NFARMRK MAD FFLIQSNYNY VNWWSTAQSL VIILSGILQL YFLKRLFNVP TTTDTKKPRC
Cross-Reactivity:	Human
Characteristics:	Antibody reactive against mammalian transfected lysate.

Target Details

Target:	TMED6
---------	-------

Target Details

Alternative Name:	TMED6 (TMED6 Products)
Background:	Full Gene Name: transmembrane emp24 protein transport domain containing 6 Synonyms: MGC23911,PRO34237,SPLL9146
Gene ID:	146456
NCBI Accession:	NM_144676

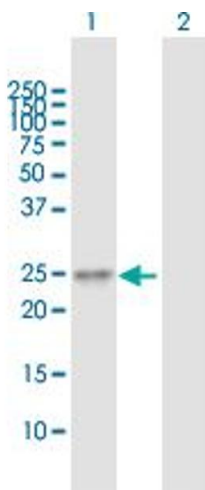
Application Details

Application Notes:	Optimal working dilution should be determined by the investigator.
Restrictions:	For Research Use only

Handling

Buffer:	In 1x PBS, pH 7.4
Handling Advice:	Aliquot to avoid repeated freezing and thawing.
Storage:	-20 °C
Storage Comment:	Store at -20°C or lower. Aliquot to avoid repeated freezing and thawing.

Images



Western Blotting

Image 1. Western Blot analysis of TMED6 expression in transfected 293T cell line by TMED6 MaxPab polyclonal antibody.

Lane 1: TMED6 transfected lysate(26.4 KDa).

Lane 2: Non-transfected lysate.