



[Go to Product page](#)

Datasheet for ABIN530960
anti-CREB3L4 antibody (AA 1-395)

1 Image

Overview

Quantity:	100 µg
Target:	CREB3L4
Binding Specificity:	AA 1-395
Reactivity:	Human
Host:	Rabbit
Clonality:	Polyclonal
Conjugate:	This CREB3L4 antibody is un-conjugated
Application:	Western Blotting (WB)

Product Details

Purpose:	Rabbit polyclonal antibody raised against a full-length human CREB3L4 protein.
Immunogen:	CREB3L4 (NP_570968.1, 1 a.a. ~ 395 a.a) full-length human protein.
Sequence:	MDLGIPDLLD AWLEPPEDIF STGSVLELGL HCPPPEVPVT RLQEQGLQGW KSGGDRGCGL QESEPEDFLK LFIDPNEVYC SEASPGSDSG ISEDPCHPDS PPAPRATSSP MLYEVVYEAG ALERMQGETG PNVGLISIQ L DQWSPAFMVP DSCMVSELPF DAHAHILPRA GTVAPVPCTT LLPCQTLFLT DEEKRLLGQE GVSLSHPLPL TKAERVLKK VRRKIRNKQS AQDSRRRKKE YIDGLSRVA ACSAQNELQ KKVQELERHN ISLVAQLRQL QTLIAQTSNK AAQTSTCVLI LLFSLALIL PSFSPFQSRP EAGSEDYQPH GVTSRNILTH KDVTENLETQ VVESRLREPP GAKDANGSTR TLLEKMGGKP RPSGRIRSVL HADEM
Cross-Reactivity:	Human
Characteristics:	Antibody reactive against mammalian transfected lysate.

Target Details

Target:	CREB3L4
Alternative Name:	CREB3L4 (CREB3L4 Products)
Background:	Full Gene Name: cAMP responsive element binding protein 3-like 4 Synonyms: AIBZIP,ATCE1,CREB3,CREB4,JAL,hJAL
Gene ID:	148327
NCBI Accession:	NM_130898
Pathways:	Thyroid Hormone Synthesis

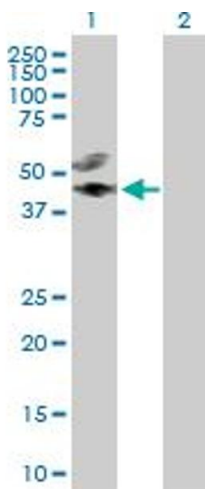
Application Details

Application Notes:	Optimal working dilution should be determined by the investigator.
Restrictions:	For Research Use only

Handling

Buffer:	In 1x PBS, pH 7.4
Handling Advice:	Aliquot to avoid repeated freezing and thawing.
Storage:	-20 °C
Storage Comment:	Store at -20°C or lower. Aliquot to avoid repeated freezing and thawing.

Images



Western Blotting

Image 1. Western Blot analysis of CREB3L4 expression in transfected 293T cell line by CREB3L4 MaxPab polyclonal antibody.

Lane 1: CREB3L4 transfected lysate(43.40 KDa).

Lane 2: Non-transfected lysate.